

Horsham College (8818)

2008 School Level Report

Please check the data in this report. If, after comparing it with your own records, you deem it to be incorrect or incomplete, follow the directions on the following website:

- <http://www.education.vic.gov.au/management/schoolimprovement/performancecd/>
then select 'School Performance Reports'.
-
-

Contents

	Page No.
Privacy	3
SFO Density and LBOTE	4
Teacher Judgments against the VELs	5-13
NAPLAN - Reading	14
- Writing	15
- Numeracy	16
AIM - Reading	17
- Mathematics	18
VCE	19-23
VET	24
VCAL	25
Teacher Assessment of Student Progress (PSD students)	26-27
Enrolment	28
Student Retention - Apparent	29
- Real	30
Exit Destination	31-34
Student Absence	35
Opinion Surveys - Parent	36
- Staff	37
Performance & Development Culture	38
Staff Sick Leave	39
Teaching Staff Retention	40
Bank Balances	41

Privacy

When reporting on the school's performance to the school community, care must be taken to avoid the disclosure of information that can directly or indirectly identify an individual. This may be a particular issue when reporting on the achievement of specific cohorts of students or the opinions of staff where there are small numbers.

In situations where privacy cannot be assured, schools may wish to report on the mean result or provide a written comment on school, year level or cohort performance.

Where the School Level Report is provided to school council members as part of any annual reporting process, or used for discussion on a school's performance, such as in consultation with the school community in the school self-evaluation process, it is important to remind school community members of their duty to only use this information for the purpose it was provided, and that the material must be kept confidential.

It is important to note that information that identifies an individual or can be used with other readily available information to identify a person is now protected by the *Information Privacy Act 2000* (<http://www.education.vic.gov.au/about/deptpolicies/informationprivacy.htm>).

SFO Density and LBOTE

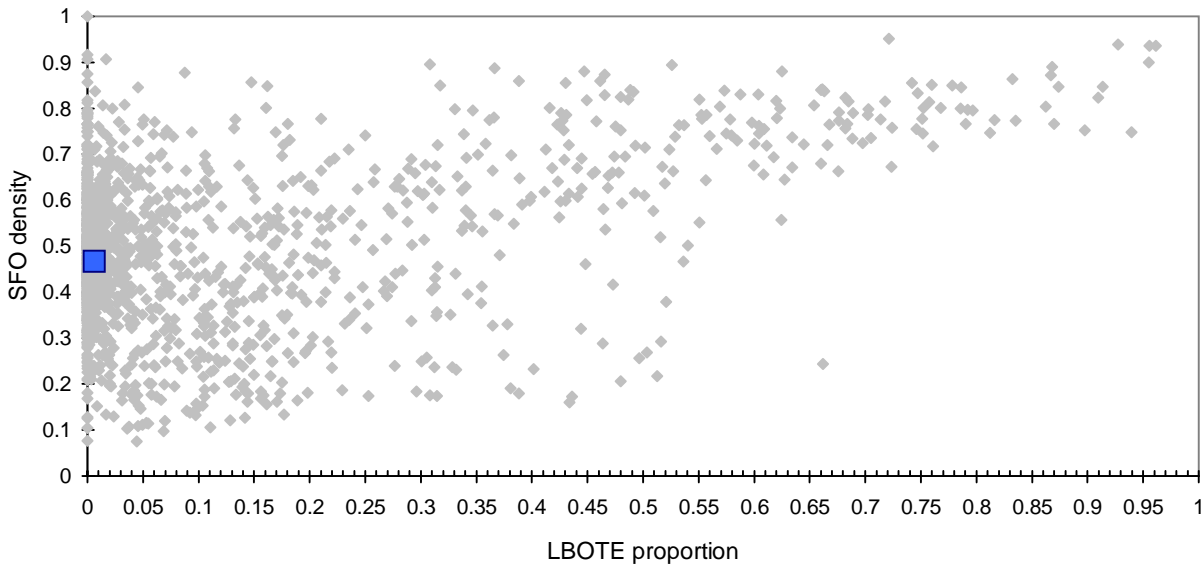
School no: 8818

School name: Horsham College

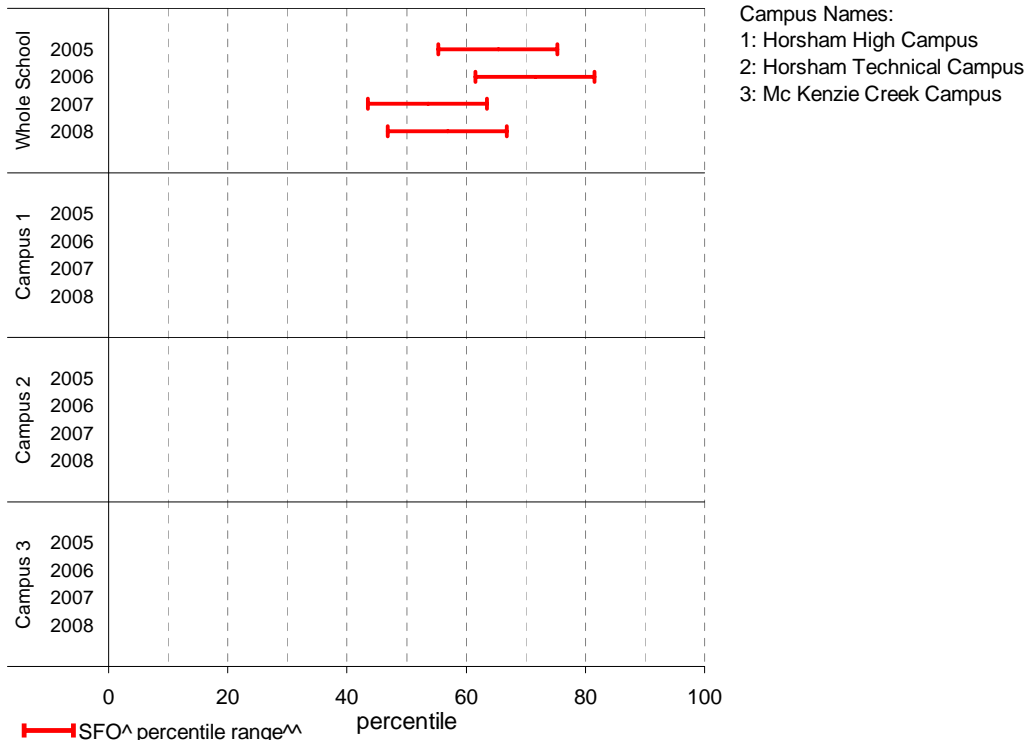
Explanation: The chart below plots the school's 2008 SFO (Student Family Occupation) density[^] and LBOTE (Language Background Other Than English) proportion* against that of all government schools. This school is highlighted as a square on the chart.

	2001	2002	2003	2004	2005	2006	2007	2008
SFO density [^] :					0.42	0.38	0.47	0.47
LBOTE proportion*:	0.00	0.00	0.00	0.00	0.00	0.00	0.01	0.01

School's 2008 SFO density and LBOTE proportion against that of all government schools



School's and Campus' SFO[^] percentile range^{^^} over time



Notes: [^] The higher the SFO density, the lower the SFO percentile and the lower the socio-economic status (SES).
^{^^} The school's SFO percentile range shows the 20% of schools with an SFO Density most like this school.
 * From 2007, a student is LBOTE if either the student or one parent/guardian speaks a language other than English at home. Prior to 2007, a student is LBOTE if the student or one of the parents was born in a non-English speaking country.

Teacher Judgments against the VELS - Year levels 7-10 combined

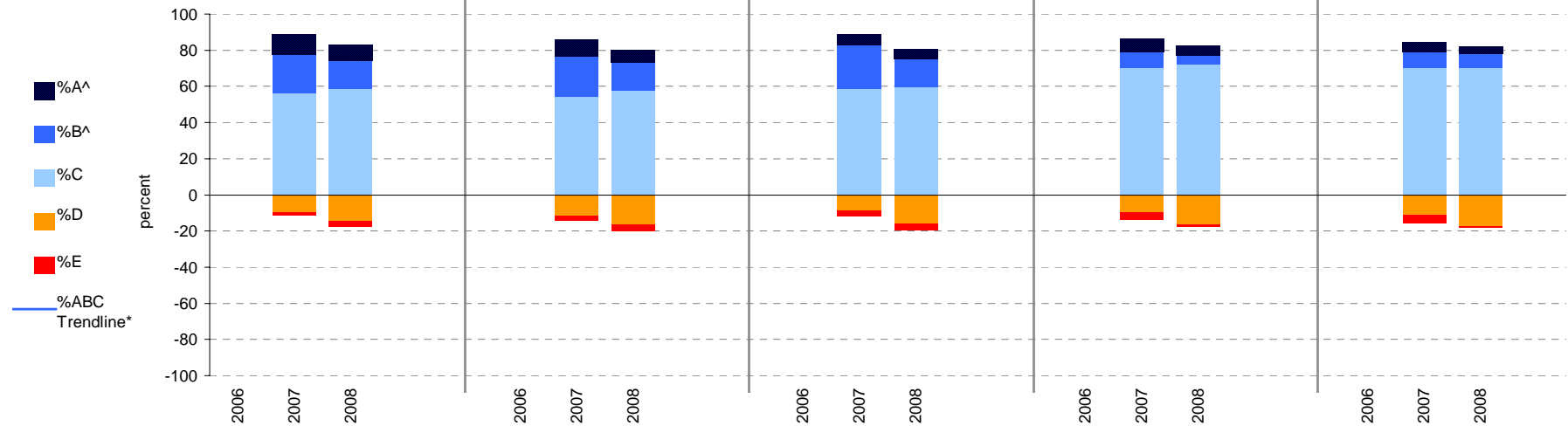
School no: 8818

School name: Horsham College

Source of data: Data retrieved electronically from CASES21.

Explanation: Teacher judgments of student achievement against the VELS.

Year Levels:	Reading						Writing					Speaking & Listening					Measurement, Chance & Data					Structure									
	total students	% A^	% B^	% C	% D	% E	total students	% A^	% B^	% C	% D	% E	total students	% A^	% B^	% C	% D	% E	total students	% A^	% B^	% C	% D	% E	total students	% A^	% B^	% C	% D	% E	
7-10	2006																														
(combined)	2007	674	11	22	56	10	2	675	9	22	55	12	3	676	6	24	59	9	3	677	7	9	70	10	4	675	5	9	70	11	5
	2008	659	9	15	59	14	3	659	7	15	58	16	4	658	5	15	60	16	3	657	5	5	72	16	1	649	4	8	70	18	1



Notes: * The school trendline is being trialled. It is only plotted when there is data for each calendar year.
 ^ The cutoff between grades A and B changed in 2007. Further information is available on the following website:
<http://www.education.vic.gov.au/studentlearning/studentreports/schools/whatsnew.htm>.

Teacher Judgments against the VELS - English (secondary)

School no: 8818

School name: Horsham College

Source of data: Data retrieved electronically from CASES21.

Explanation: Teacher judgments of student achievement against the VELS.

Notes: * The school trendline is only plotted when there is data for each calendar year.

** In 2006, approx. 850 schools assessed their students against the 0.25 VELS scale. 2006 benchmarks are therefore based on a subset of schools.

^ The cutoff between grades A and B changed in 2007. Further information is available on the following website: <http://www.education.vic.gov.au/studentlearning/studentreports/schools/whatsnew.htm>.

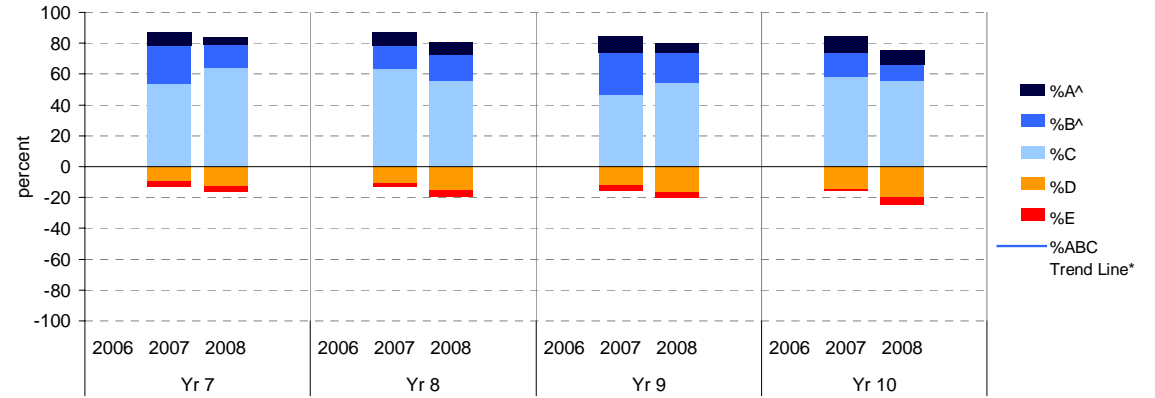
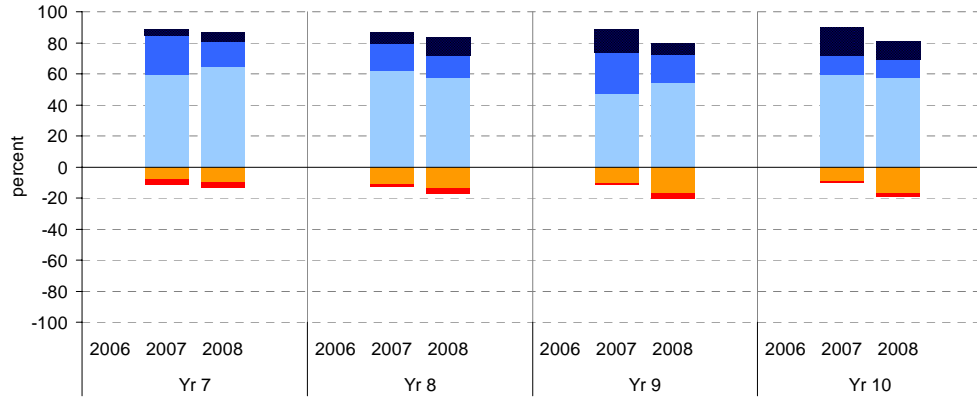
^^ 2008 benchmarks and percentiles will be calculated in August, when data from all schools has been submitted.

Reading

	total students	% of students by grade					Mean Score			total students	% of students by grade					Mean Score	
		A^	B^	C	D	E	School	State**			A^	B^	C	D	E	School	State**
Yr 7	2006						4.47	4.32		2006						5.54	5.26
	2007	182	4	25	59	8	4.47	4.39		2007	206	15	27	47	10	5.54	5.36
	2008	172	6	16	65	10	4.38			2008	162	7	19	54	17	5.40	
Yr 8	2006						4.94	4.78		2006						6.05	5.77
	2007	168	7	18	62	11	4.94	4.85		2007	118	18	13	59	9	6.05	5.85
	2008	165	11	15	58	14	4.94			2008	160	11	12	58	17	5.93	
Yr 9	2006									2006							
	2007									2007							
	2008									2008							
Yr 10	2006									2006							
	2007									2007							
	2008									2008							

Writing

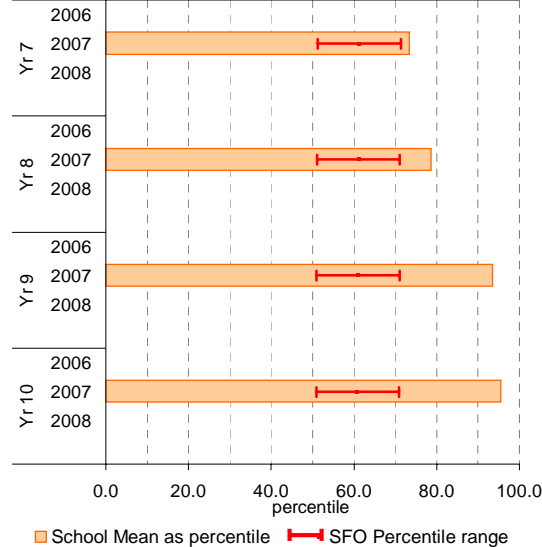
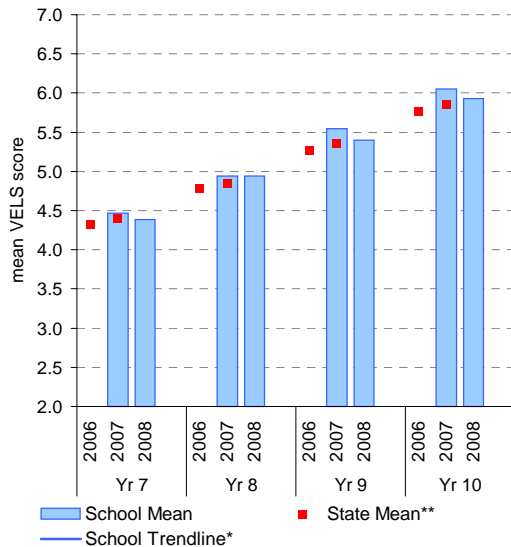
	total students	% of students by grade					Mean Score			total students	% of students by grade					Mean Score	
		A^	B^	C	D	E	School	State**			A^	B^	C	D	E	School	State**
Yr 7	2006						4.47	4.28		2006						5.50	5.25
	2007	182	8	25	54	9	4.47	4.36		2007	207	11	28	46	12	5.50	5.34
	2008	172	5	15	64	13	4.35			2008	162	6	19	55	17	5.40	
Yr 8	2006						4.92	4.75		2006						5.96	5.75
	2007	167	8	16	63	11	4.92	4.83		2007	119	10	16	58	15	5.96	5.83
	2008	165	8	17	56	15	4.91			2008	160	9	11	56	20	5.88	
Yr 9	2006									2006							
	2007									2007							
	2008									2008							
Yr 10	2006									2006							
	2007									2007							
	2008									2008							



Reading

School Mean against State Mean^^

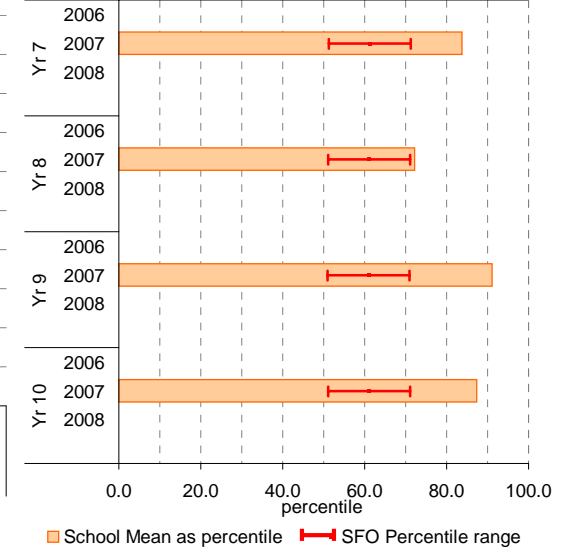
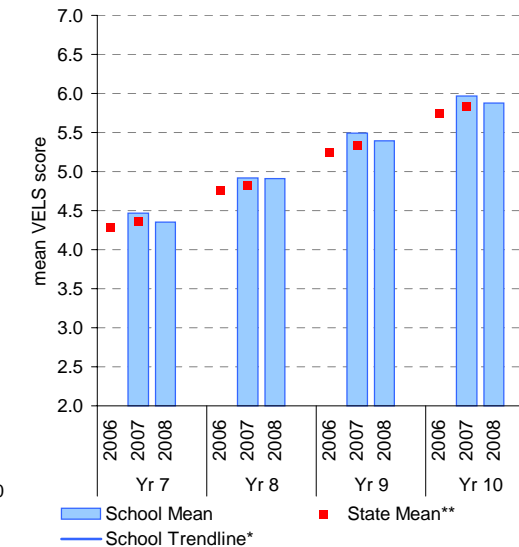
School Mean as percentile against SFO percentile range^^



Writing

School Mean against State Mean^^

School Mean as percentile against SFO percentile range^^



Teacher Judgments against the VELS - English (secondary)

School no: 8818

School name: Horsham College

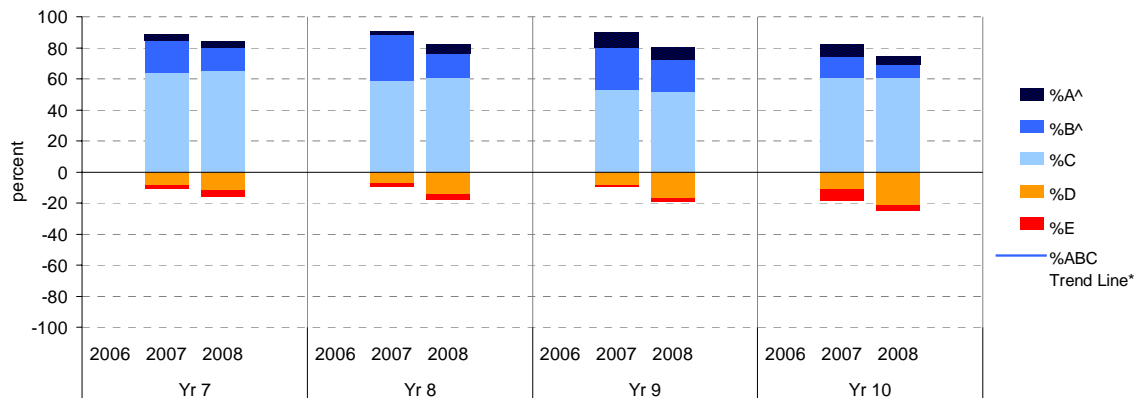
Source of data: Data retrieved electronically from CASES21.

Explanation: Teacher judgments of student achievement against the VELS.

Notes: * The school trendline is only plotted when there is data for each calendar year.
 ** In 2006, approx. 850 schools assessed their students against the 0.25 VELS scale. 2006 benchmarks are therefore based on a subset of schools.
 ^ The cutoff between grades A and B changed in 2007. Further information is available on the following website: <http://www.education.vic.gov.au/studentlearning/studentreports/schools/whatsnew.htm>.
 ^^ 2008 benchmarks and percentiles will be calculated in August, when data from all schools has been submitted.

Speaking and Listening

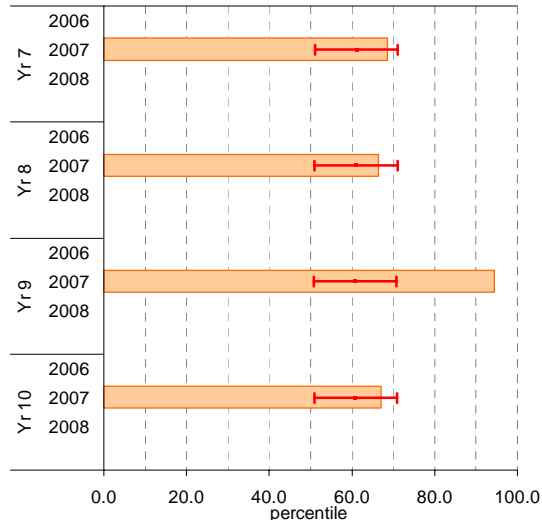
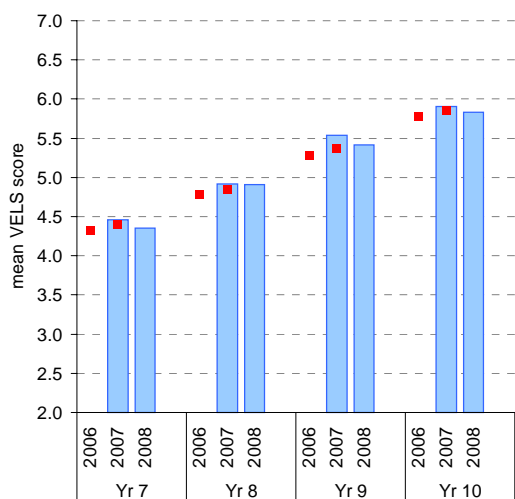
	total students	% of students by grade					Mean Score		total students		% of students by grade					Mean Score		
		A^	B^	C	D	E	School	State**			A^	B^	C	D	E	School	State**	
Yr 7	2006						4.33	4.33	2006							5.28	5.28	
	2007	182	4	20	64	9	2	4.46	4.39	2007	204	10	28	52	8	1	5.54	5.36
	2008	172	4	15	65	12	4	4.35		2008	162	7	21	52	17	2	5.42	
Yr 8	2006						4.79	4.79	2006							5.78	5.78	
	2007	169	2	30	59	7	2	4.92	4.85	2007	121	7	14	60	11	7	5.90	5.85
	2008	163	6	16	61	15	3	4.91		2008	161	5	9	61	22	4	5.83	



Speaking and Listening

School Mean against State Mean^^

School Mean as percentile against SFO percentile range^^



School Mean
School Trendline*

State Mean**

School Mean as percentile SFO Percentile range

Teacher Judgments against the VELS - Mathematics (secondary)

School no: 8818

School name: Horsham College

Source of data: Data retrieved electronically from CASES21.

Explanation: Teacher judgments of student achievement against the VELS.

Notes: * The school trendline is only plotted when there is data for each calendar year.

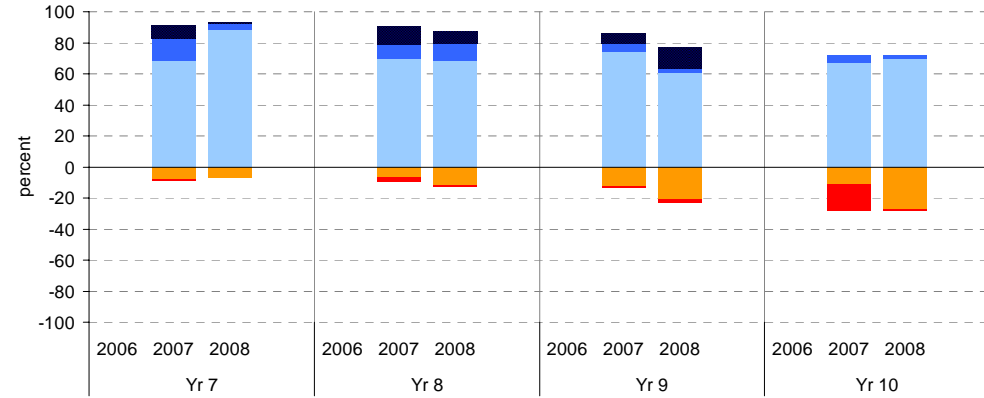
** In 2006, approx. 850 schools assessed their students against the 0.25 VELS scale. 2006 benchmarks are therefore based on a subset of schools.

^ The cutoff between grades A and B changed in 2007. Further information is available on the following website: <http://www.education.vic.gov.au/studentlearning/studentreports/schools/whatsnew.htm>.

^^ 2008 benchmarks and percentiles will be calculated in August, when data from all schools has been submitted.

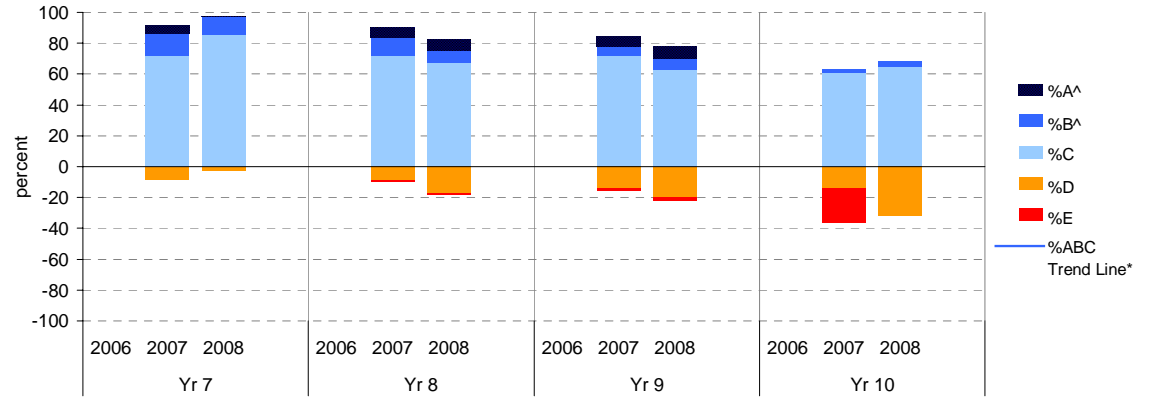
Measurement, Chance and Data

	total students	% of students by grade					Mean Score	
		A^	B^	C	D	E	School	State**
Yr 7	2006						4.48	4.31
	2007	186	8	15	68	8	1	4.40
	2008	172	1	4	88	7	0	4.44
Yr 8	2006						4.94	4.78
	2007	170	12	9	69	6	3	4.83
	2008	165	8	11	68	12	1	4.94
Yr 9	2006						5.42	5.24
	2007	207	7	5	74	13	1	5.34
	2008	160	14	3	61	21	3	5.35
Yr 10	2006						5.71	5.66
	2007	114	0	4	68	11	17	5.76
	2008	160	0	2	70	27	1	5.77



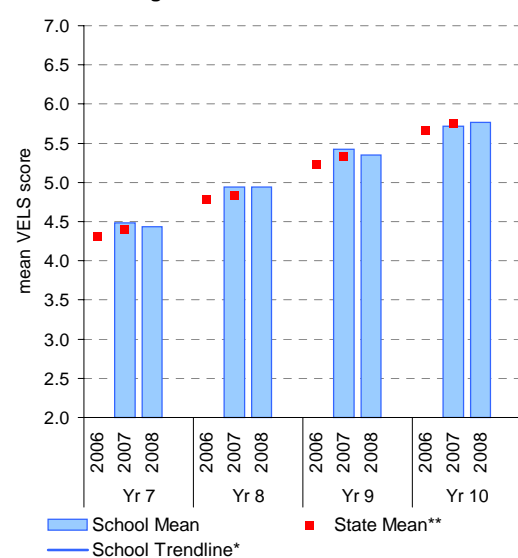
Structure

	total students	% of students by grade					Mean Score	
		A^	B^	C	D	E	School	State**
Yr 7	2006						4.46	4.30
	2007	184	5	15	72	8	0	4.39
	2008	171	1	12	85	2	0	4.48
Yr 8	2006						4.95	4.74
	2007	169	7	12	72	9	1	4.82
	2008	164	7	9	67	17	1	4.89
Yr 9	2006						5.41	5.21
	2007	207	7	6	72	14	2	5.29
	2008	155	8	8	63	20	2	5.34
Yr 10	2006						5.63	5.60
	2007	115	0	3	61	14	23	5.72
	2008	159	0	3	65	32	0	5.73

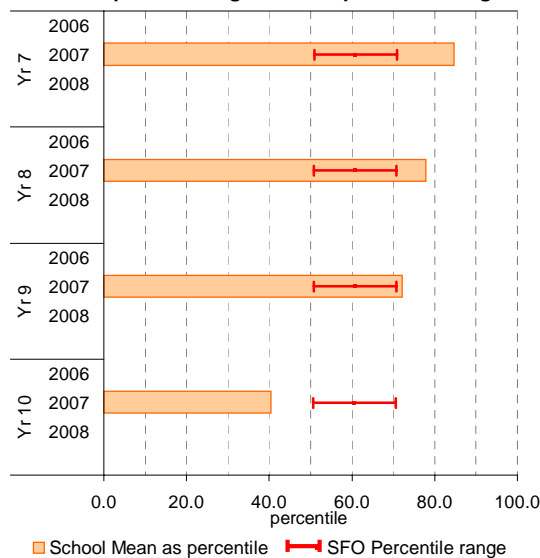


Measurement, Chance and Data

School Mean against State Mean^^

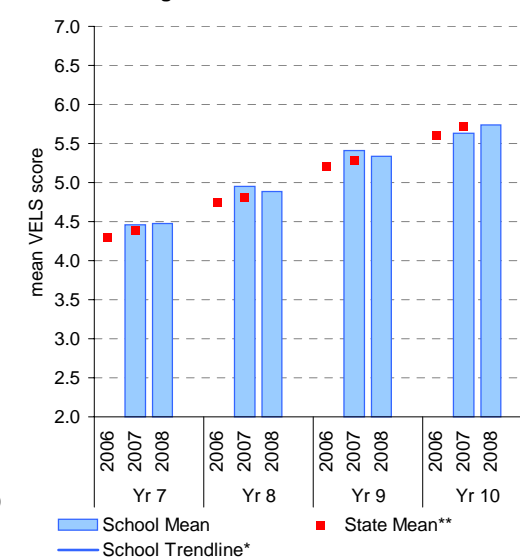


School Mean as percentile against SFO percentile range^^

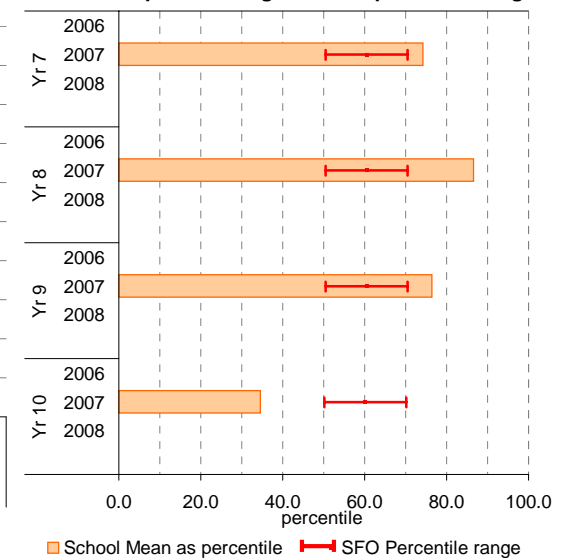


Structure

School Mean against State Mean^^



School Mean as percentile against SFO percentile range^^



Teacher Judgments against the VELS - English (secondary)

School no: 8818
School name: Horsham College
Source of data: Data retrieved electronically from CASES21.
Explanation: Teacher judgments of student achievement against the VELS.

Reading

Year Level	Year	Total ¹	Assessed ²	Level 1			Level 2			Level 3			Level 4			Level 5			Level 6			Level 6E			School mean	State mean [^]	Difference between school and state mean [^]							
				0.00	0.50	1.00	1.25	1.50	1.75	2.00	2.25	2.50	2.75	3.00	3.25	3.50	3.75	4.00	4.25	4.50	4.75	5.00	5.25	5.50				5.75	6.00	6.25	6.50	6.75		
yr7	2008	173	172	1							1	1		3	2	15	49	62	28	10								4.38						
yr7	2007	186	182										2	4	2	13	25	83	46	7								4.47	4.39	0.08				
yr8	2008	170	165												2	3	4	19	27	68	24	18						4.94						
yr7	2006																												4.32					
yr8	2007	184	168	1											2		5	14	29	75	30	10		1	1		4.94	4.85	0.10					
yr9	2008	167	162														1	4	7	21	33	55	30	11				5.40						
yr7	2005																																	
yr8	2006																													4.78				
yr9	2007	213	206														2	4	17	29	68	55	29	1	1		5.54	5.36	0.18					
yr10	2008	164	160														1	1	2	7	20	26	66	19	14	4		5.93						
yr8	2005																																	
yr9	2006																													5.26				
yr10	2007	130	118														1							1	10	10	60	15	14	7	6.05	5.85	0.20	
yr9	2005																																	
yr10	2006																														5.77			

shading indicates a 'C' grade (at the expected standard) on the VELS scale.

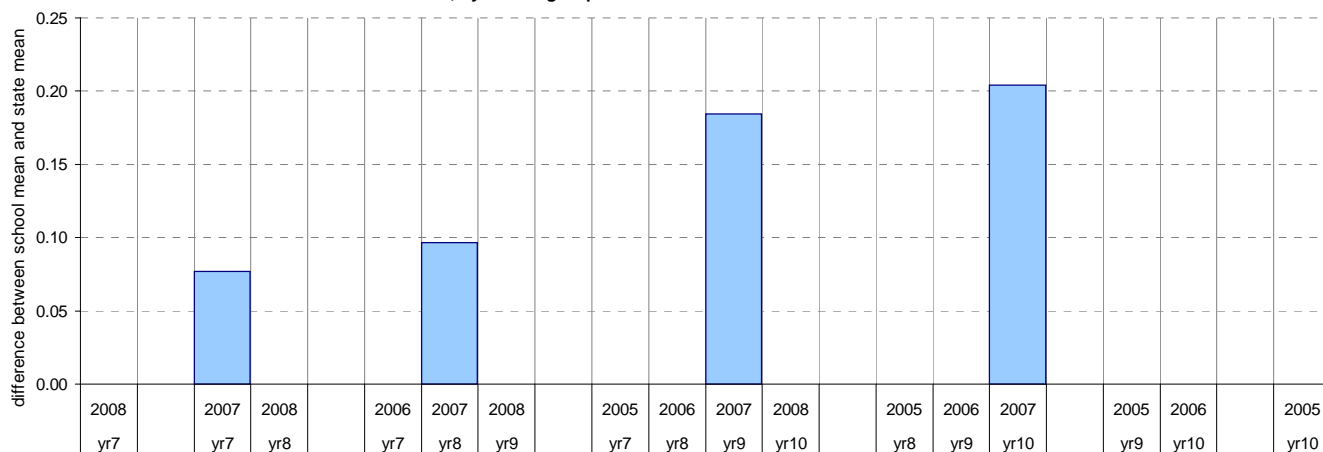
¹ The total number of students eligible to be assessed. This figure will typically match, or be very close to, the Year Level enrolment.

² The number of students assessed against the VELS. The difference between this figure and the total (1) should be accounted for by students assessed against Individual Learning Plans and/or the ESL companion in the case of English.

* In 2006, approx. 850 schools assessed their students against the 0.25 VELS scale. 2006 benchmarks are therefore based on a subset of schools.

[^] 2008 benchmarks will be calculated in August, when data from all schools has been submitted.

Difference between school mean and state mean[^], by cohort group



Teacher Judgments against the VELS - English (secondary)

School no: 8818
School name: Horsham College
Source of data: Data retrieved electronically from CASES21.
Explanation: Teacher judgments of student achievement against the VELS.

Writing

Year Level	Year	Total ¹	Assessed ²	Level 1			Level 2			Level 3			Level 4			Level 5			Level 6			Level 6E			School mean	State mean [^]	Difference between school and state mean [^]		
				0.00	0.50	1.00	1.25	1.50	1.75	2.00	2.25	2.50	2.75	3.00	3.25	3.50	3.75	4.00	4.25	4.50	4.75	5.00	5.25	5.50				5.75	6.00
yr7	2008	173	172	1						1	1		3	7	15	47	63	26	8								4.35		
yr7	2007	186	182									1	6	4	13	29	69	45	15								4.47	4.36	0.11
yr8	2008	170	165											2	5	6	19	27	65	28	13						4.91		
yr7	2006																										4.28		
yr8	2007	184	167	1				1					1	1		2	16	33	73	26	12			1		4.92	4.83	0.09	
yr9	2008	167	162													1	4	9	18	35	54	31	10			5.40			
yr7	2005																												
yr8	2006																										4.75		
yr9	2007	213	207													7	5	20	25	71	57	20	1	1		5.50	5.34	0.16	
yr10	2008	165	160													2	1	4	8	24	24	65	17	12	3	5.88			
yr8	2005																												
yr9	2006																										5.25		
yr10	2007	133	119														1			2	16	19	50	19	10	2	5.96	5.83	0.14
yr9	2005																												
yr10	2006																										5.75		

shading indicates a 'C' grade (at the expected standard) on the VELS scale.

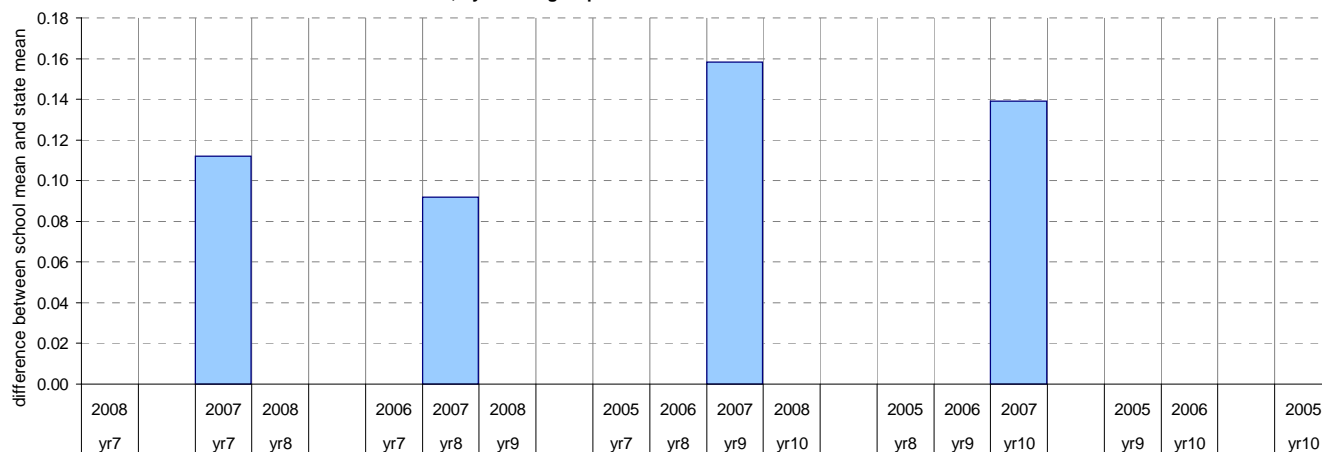
¹ The total number of students eligible to be assessed. This figure will typically match, or be very close to, the Year Level enrolment.

² The number of students assessed against the VELS. The difference between this figure and the total (1) should be accounted for by students assessed against Individual Learning Plans and/or the ESL companion in the case of English.

* In 2006, approx. 850 schools assessed their students against the 0.25 VELS scale. 2006 benchmarks are therefore based on a subset of schools.

[^] 2008 benchmarks will be calculated in August, when data from all schools has been submitted.

Difference between school mean and state mean[^], by cohort group



Teacher Judgments against the VELS - English (secondary)

School no: 8818
School name: Horsham College
Source of data: Data retrieved electronically from CASES21.
Explanation: Teacher judgments of student achievement against the VELS.

Speaking and Listening

Year Level	Year	Total ¹	Assessed ²	Level 1			Level 2			Level 3			Level 4			Level 5			Level 6			Level 6E			School mean	State mean [^]	Difference between school and state mean [^]			
				0.00	0.50	1.00	1.25	1.50	1.75	2.00	2.25	2.50	2.75	3.00	3.25	3.50	3.75	4.00	4.25	4.50	4.75	5.00	5.25	5.50				5.75	6.00	6.25
yr7	2008	173	172	1						1			2	3	2	18	50	62	26	7								4.35		
yr7	2007	186	182								1		3	2	14	33	84	37	8									4.46	4.39	0.06
yr8	2008	170	163											1	4	3	21	29	70		26	9						4.91		
yr7	2006																											4.33		
yr8	2007	184	169	2							1					3	9	35	65		50	3						4.92	4.85	0.07
yr9	2008	167	162													2	2	9	19		30	54	34	12				5.42		
yr7	2005																													
yr8	2006																											4.79		
yr9	2007	213	204													3	3	14		17	90	57	19		1		5.54	5.36	0.18	
yr10	2008	165	161													1	1	4		11	24	33	65		14	6	2	5.83		
yr8	2005																													
yr9	2006																											5.28		
yr10	2007	133	121															9		4	9	16	57		17	8	1	5.90	5.85	0.06
yr9	2005																													
yr10	2006																											5.78		
yr10	2005																													

shading indicates a 'C' grade (at the expected standard) on the VELS scale.

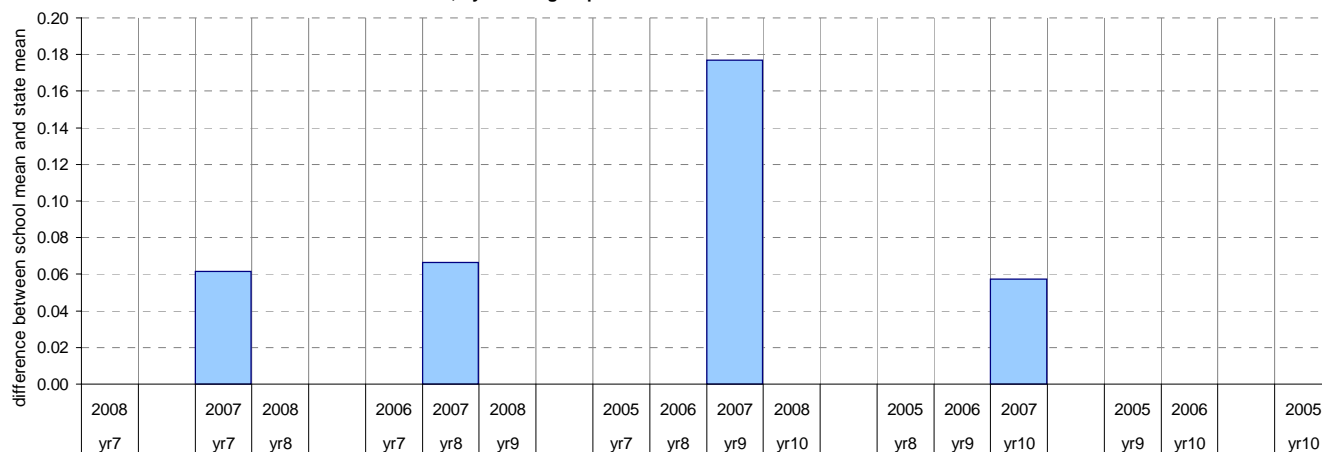
¹ The total number of students eligible to be assessed. This figure will typically match, or be very close to, the Year Level enrolment.

² The number of students assessed against the VELS. The difference between this figure and the total (1) should be accounted for by students assessed against Individual Learning Plans and/or the ESL companion in the case of English.

* In 2006, approx. 850 schools assessed their students against the 0.25 VELS scale. 2006 benchmarks are therefore based on a subset of schools.

[^] 2008 benchmarks will be calculated in August, when data from all schools has been submitted.

Difference between school mean and state mean[^], by cohort group



Teacher Judgments against the VELS - Mathematics (secondary)

School no: 8818
School name: Horsham College
Source of data: Data retrieved electronically from CASES21.
Explanation: Teacher judgments of student achievement against the VELS.

Measurement, Chance and Data

Year Level	Year	Total ¹	Assessed ²	Level 1			Level 2			Level 3			Level 4			Level 5			Level 6			Level 6E			School mean	State mean [^]	Difference between school and state mean [^]					
				0.00	0.50	1.00	1.25	1.50	1.75	2.00	2.25	2.50	2.75	3.00	3.25	3.50	3.75	4.00	4.25	4.50	4.75	5.00	5.25	5.50				5.75	6.00	6.25	6.50	6.75
yr7	2008	175	172												12	28	124	7	1										4.44			
yr7	2007	190	186											2	2	13	31	96	27	15									4.48	4.40	0.08	
yr8	2008	174	165												2	5	14	30	83		18	13							4.94			
yr7	2006																													4.31		
yr8	2007	184	170									1	1	1	2	2	9	48	70		16	20						4.94	4.83	0.10		
yr9	2008	169	160												2	2	8	25		48	49	4	22					5.35				
yr7	2005																															
yr8	2006																													4.78		
yr9	2007	212	207													1	2	2	24		37	117	10	14				5.42	5.34	0.09		
yr10	2008	161	160															2		7	36	49	63	3				5.77				
yr8	2005																															
yr9	2006																													5.24		
yr10	2007	118	114															19		10	3	23	54	5				5.71	5.76	-0.05		
yr9	2005																															
yr10	2006																													5.66		
yr10	2005																															

shading indicates a 'C' grade (at the expected standard) on the VELS scale.

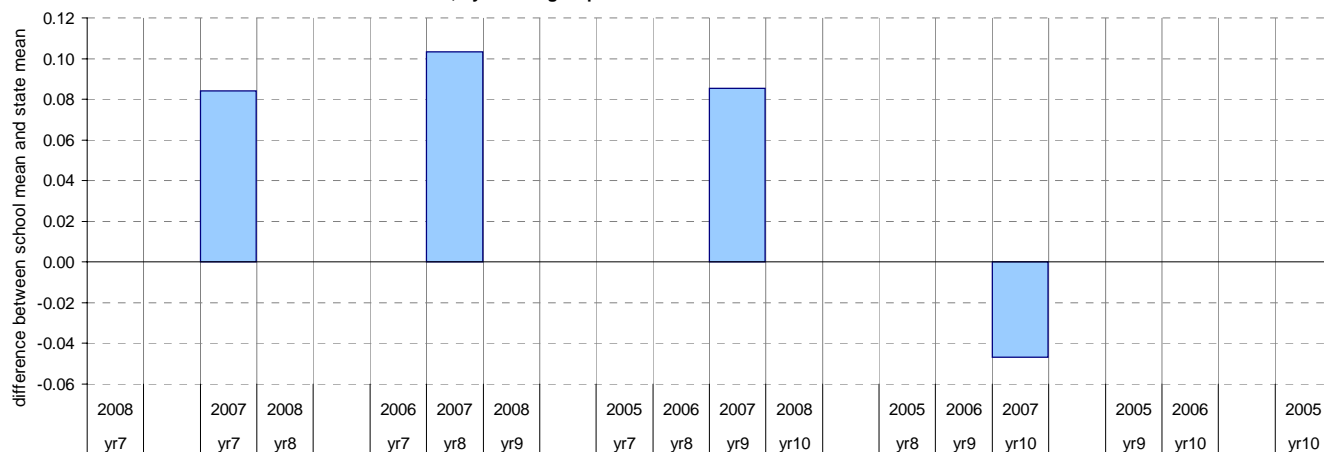
¹ The total number of students eligible to be assessed. This figure will typically match, or be very close to, the Year Level enrolment.

² The number of students assessed against the VELS. The difference between this figure and the total (1) should be accounted for by students assessed against Individual Learning Plans and/or the ESL companion in the case of English.

* In 2006, approx. 850 schools assessed their students against the 0.25 VELS scale. 2006 benchmarks are therefore based on a subset of schools.

[^] 2008 benchmarks will be calculated in August, when data from all schools has been submitted.

Difference between school mean and state mean[^], by cohort group



Teacher Judgments against the VELS - Mathematics (secondary)

School no: 8818
School name: Horsham College
Source of data: Data retrieved electronically from CASES21.
Explanation: Teacher judgments of student achievement against the VELS.

Structure

Year Level	Year	Total ¹	Assessed ²	Level 1			Level 2			Level 3			Level 4			Level 5			Level 6			Level 6E			School mean	State mean [^]	Difference between school and state mean [^]							
				0.00	0.50	1.00	1.25	1.50	1.75	2.00	2.25	2.50	2.75	3.00	3.25	3.50	3.75	4.00	4.25	4.50	4.75	5.00	5.25	5.50				5.75	6.00	6.25	6.50	6.75		
yr7	2008	175	171										4				29	117	20	1											4.48			
yr7	2007	190	184										3	12			47	85	27	10										4.46	4.39	0.07		
yr8	2008	174	164										1				11	17	39	71	14	11								4.89				
yr7	2006																														4.30			
yr8	2007	184	169										1	1			1	14	34	87	20	11							4.95	4.82	0.14			
yr9	2008	169	155										1				2	9	22	52	45	12	12						5.34					
yr7	2005																																	
yr8	2006																															4.74		
yr9	2007	212	207														1	3		28	44	105	12	14					5.41	5.29	0.12			
yr10	2008	161	159																		15	36	57	46	5				5.73					
yr8	2005																																	
yr9	2006																															5.21		
yr10	2007	118	115																26	8	8	28	42	3					5.63	5.72	-0.08			
yr9	2005																																	
yr10	2006																															5.60		
yr10	2005																																	

shading indicates a 'C' grade (at the expected standard) on the VELS scale.

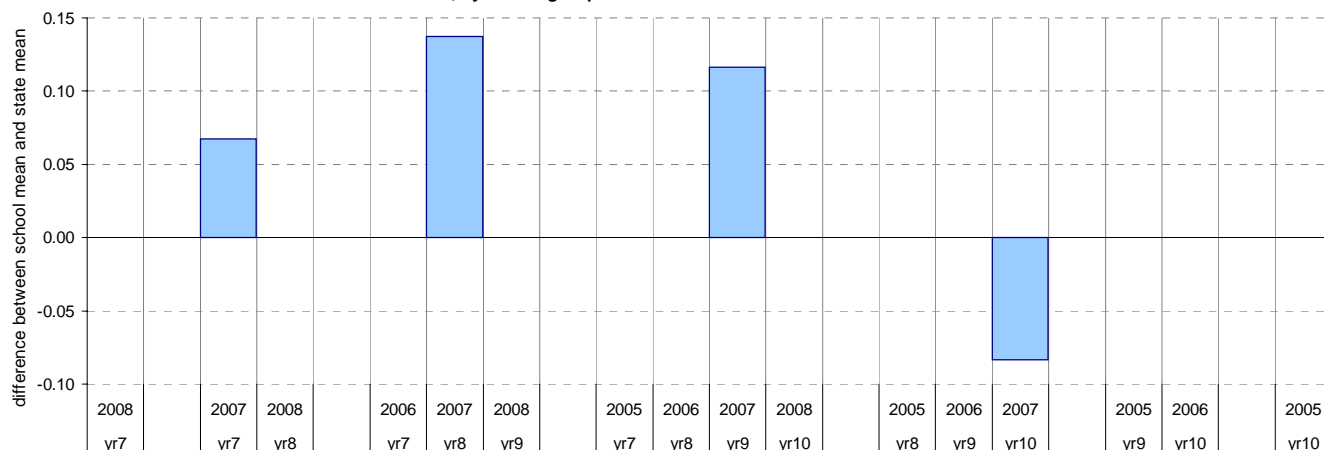
¹ The total number of students eligible to be assessed. This figure will typically match, or be very close to, the Year Level enrolment.

² The number of students assessed against the VELS. The difference between this figure and the total (1) should be accounted for by students assessed against Individual Learning Plans and/or the ESL companion in the case of English.

* In 2006, approx. 850 schools assessed their students against the 0.25 VELS scale. 2006 benchmarks are therefore based on a subset of schools.

[^] 2008 benchmarks will be calculated in August, when data from all schools has been submitted.

Difference between school mean and state mean[^], by cohort group



NAPLAN Year 7 and 9: Reading

School no: 8818

School name: Horsham College

Source of data: Victorian Curriculum and Assessment Authority.

Explanation: The National Assessment Program - Literacy and Numeracy (NAPLAN) is conducted each year for students in Years 3, 5, 7 and 9. For more detailed NAPLAN data, refer to the NAPLAN Data Service website at <http://naplands.vcaa.vic.edu.au>. A reference guide for analysing NAPLAN data is available at <http://www.vcaa.vic.edu.au/vcaa/prep10/naplan/schools/analysingnaplandata.pdf>.

Notes: * % student participation = (students who participated in NAPLAN / February enrolments) * 100

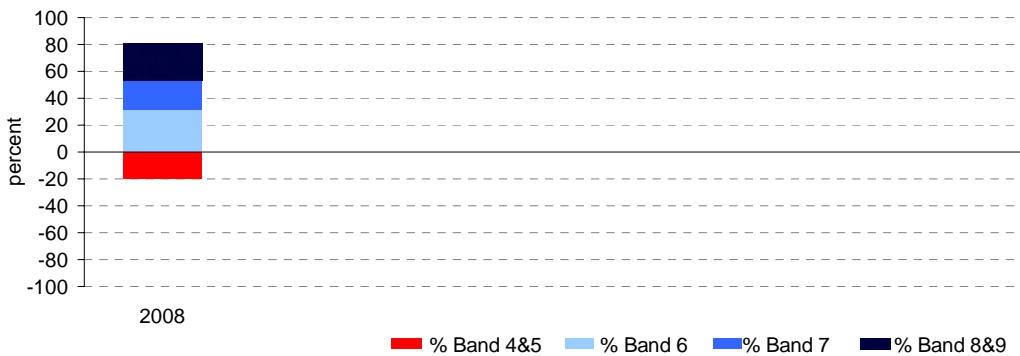
Year 7

	student participation		Percent of students by NAP Band						Mean Scaled Score	
	(n)	(%)*	Band 4	Band 5	Band 6	Band 7	Band 8	Band 9	School	State
2008	165	91	8	12	32	21	22	6	532.2	531.1

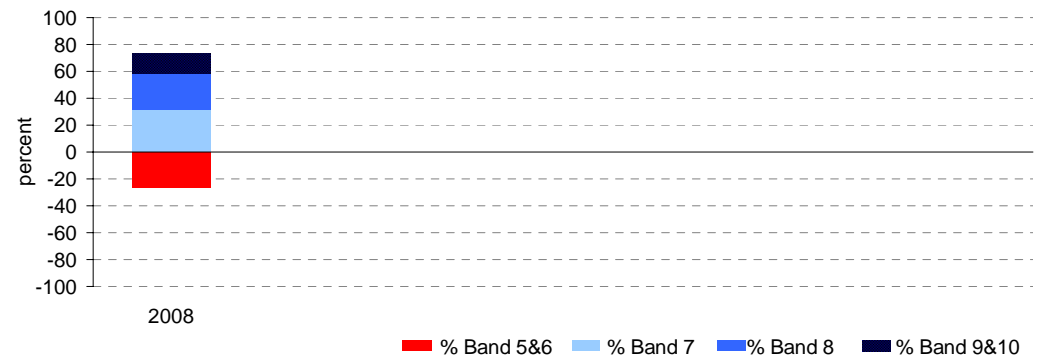
Year 9

	student participation		Percent of students by NAP Band						Mean Scaled Score	
	(n)	(%)*	Band 5	Band 6	Band 7	Band 8	Band 9	Band 10	School	State
2008	164	89	6	21	32	26	12	3	570.7	572.5

Percent of students by NAP Band

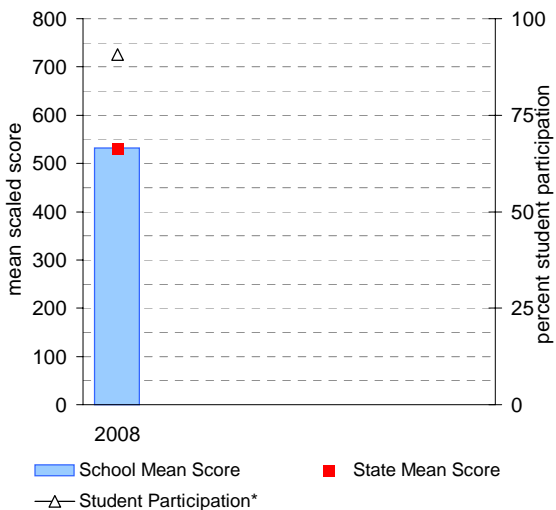


Percent of students by NAP Band

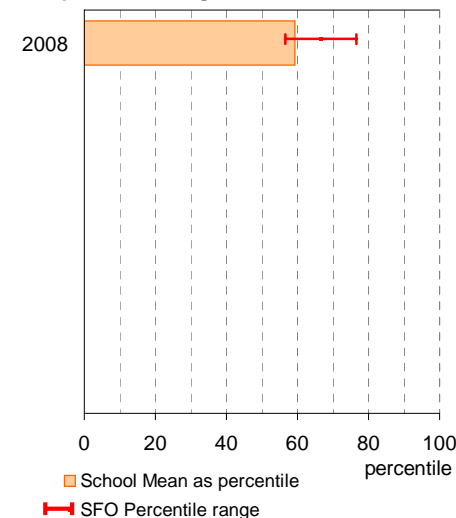


Year 7

School Mean against State Mean, including Participation

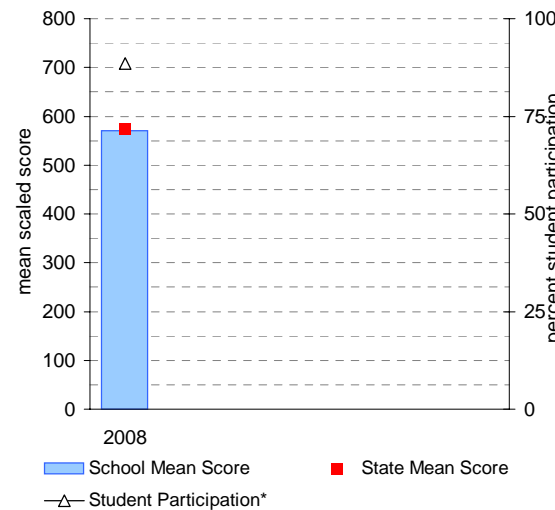


School Mean as percentile against SFO percentile range

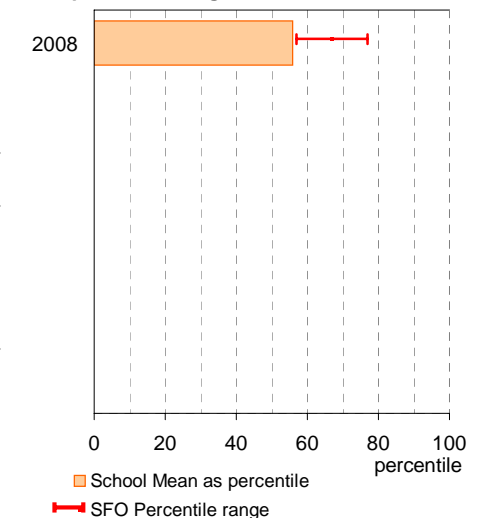


Year 9

School Mean against State Mean, including Participation



School Mean as percentile against SFO percentile range



NAPLAN Year 7 and 9: Writing

School no: 8818

School name: Horsham College

Source of data: Victorian Curriculum and Assessment Authority.

Explanation: The National Assessment Program - Literacy and Numeracy (NAPLAN) is conducted each year for students in Years 3, 5, 7 and 9. For more detailed NAPLAN data, refer to the NAPLAN Data Service website at <http://naplands.vcaa.vic.edu.au>. A reference guide for analysing NAPLAN data is available at <http://www.vcaa.vic.edu.au/vcaa/prep10/naplan/schools/analysingnaplandata.pdf>.

Notes: * % student participation = (students who participated in NAPLAN / February enrolments) * 100

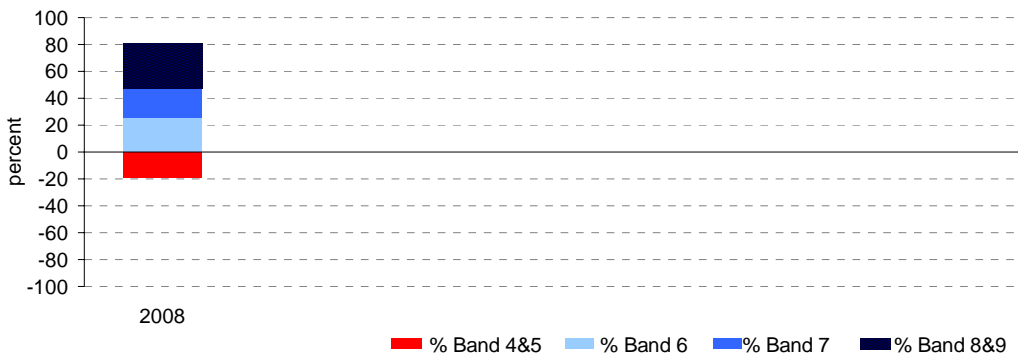
Year 7

	student participation		Percent of students by NAP Band						Mean Scaled Score	
	(n)	(%)*	Band 4	Band 5	Band 6	Band 7	Band 8	Band 9	School	State
2008	163	90	10	9	26	22	20	14	539.0	534.0

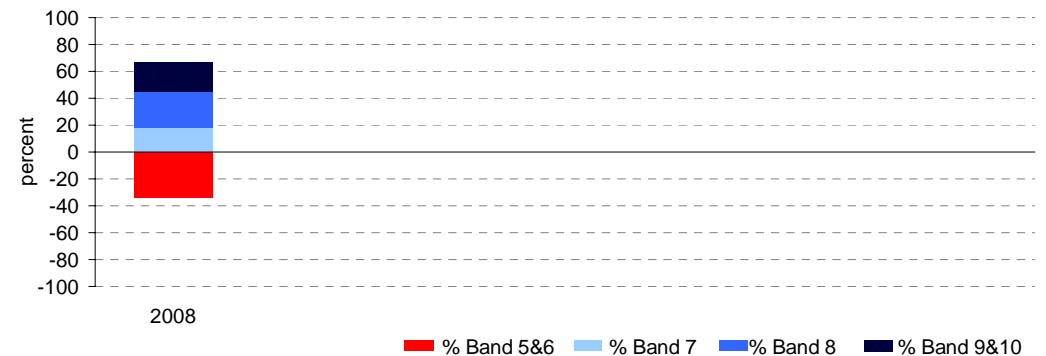
Year 9

	student participation		Percent of students by NAP Band						Mean Scaled Score	
	(n)	(%)*	Band 5	Band 6	Band 7	Band 8	Band 9	Band 10	School	State
2008	155	84	14	19	18	27	12	9	565.0	571.4

Percent of students by NAP Band

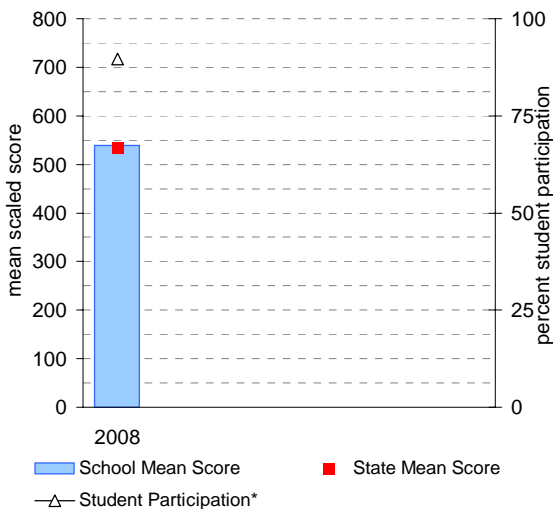


Percent of students by NAP Band

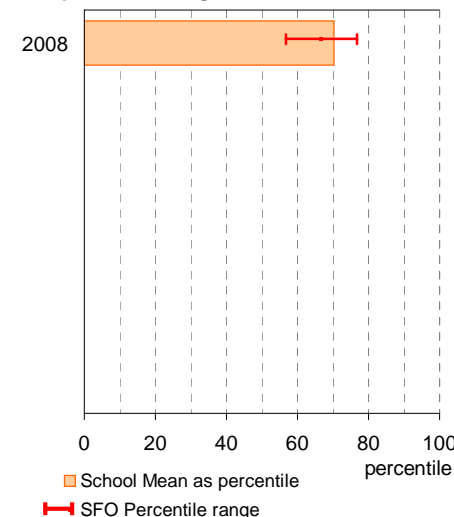


Year 7

School Mean against State Mean, including Participation

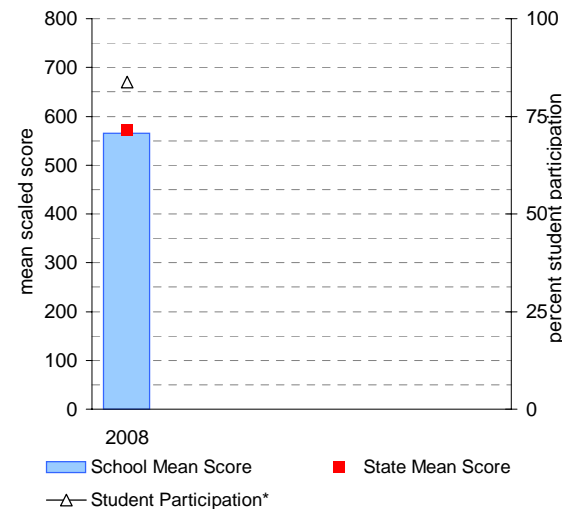


School Mean as percentile against SFO percentile range

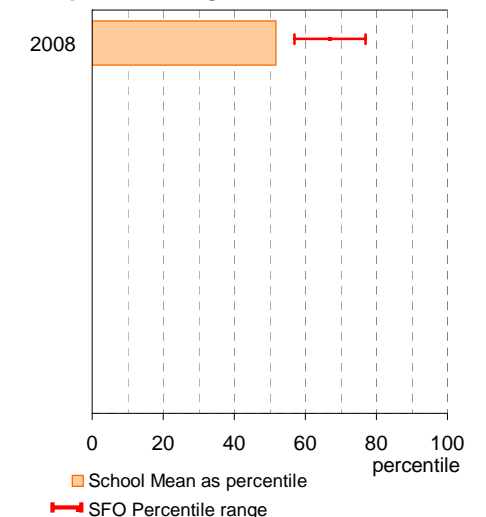


Year 9

School Mean against State Mean, including Participation



School Mean as percentile against SFO percentile range



NAPLAN Year 7 and 9: Numeracy

School no: 8818

School name: Horsham College

Source of data: Victorian Curriculum and Assessment Authority.

Explanation: The National Assessment Program - Literacy and Numeracy (NAPLAN) is conducted each year for students in Years 3, 5, 7 and 9. For more detailed NAPLAN data, refer to the NAPLAN Data Service website at <http://naplands.vcaa.vic.edu.au>. A reference guide for analysing NAPLAN data is available at <http://www.vcaa.vic.edu.au/vcaa/prep10/naplan/schools/analysingnaplandata.pdf>.

Notes: * % student participation = (students who participated in NAPLAN / February enrolments) * 100

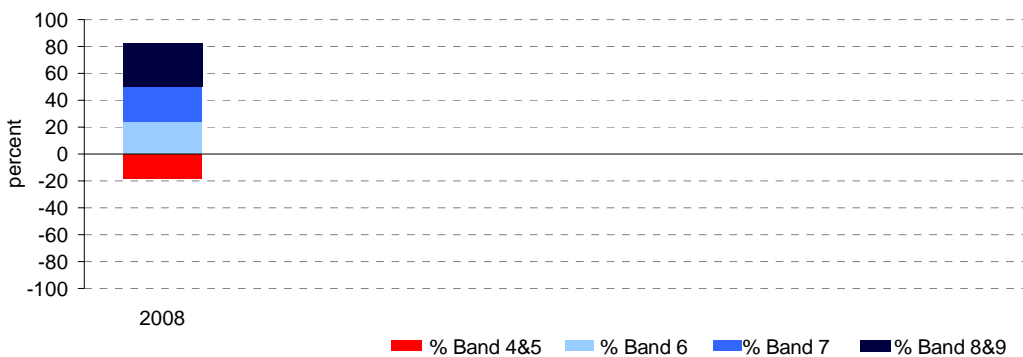
Year 7

	student participation		Percent of students by NAP Band						Mean Scaled Score	
	(n)	(%)*	Band 4	Band 5	Band 6	Band 7	Band 8	Band 9	School	State
2008	160	88	1	17	24	26	23	9	548.9	541.2

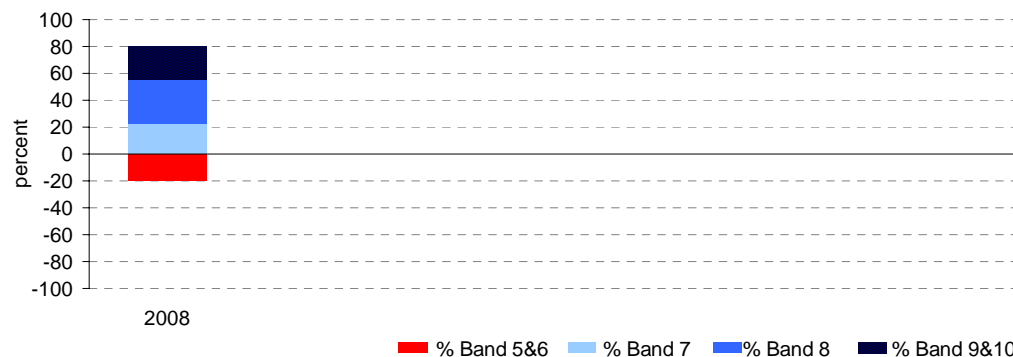
Year 9

	student participation		Percent of students by NAP Band						Mean Scaled Score	
	(n)	(%)*	Band 5	Band 6	Band 7	Band 8	Band 9	Band 10	School	State
2008	165	89	4	16	22	33	17	7	591.0	579.0

Percent of students by NAP Band

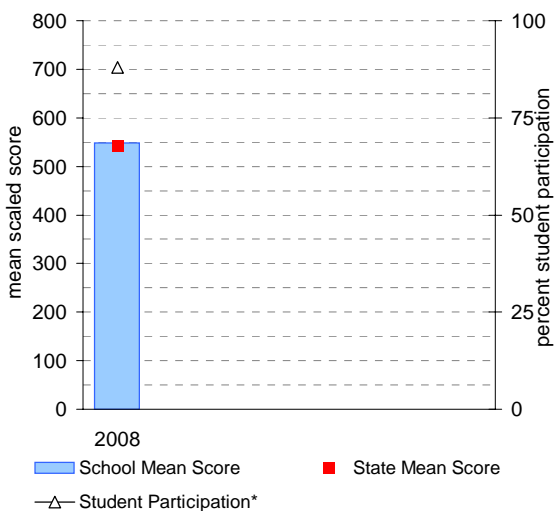


Percent of students by NAP Band

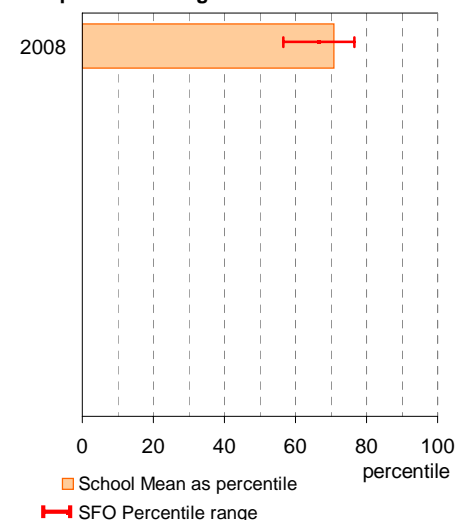


Year 7

School Mean against State Mean, including Participation

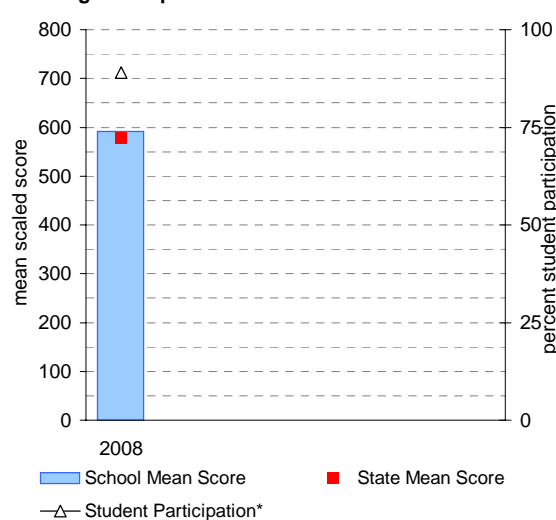


School Mean as percentile against SFO percentile range

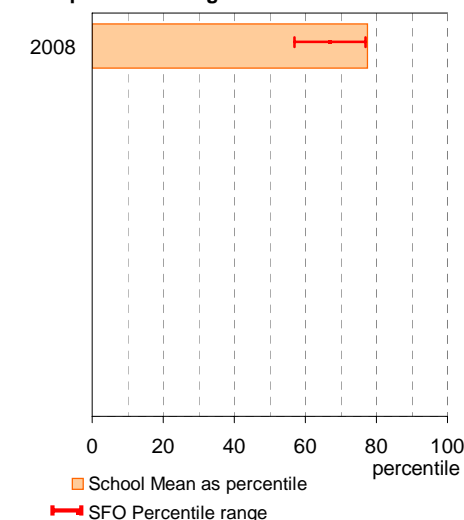


Year 9

School Mean against State Mean, including Participation



School Mean as percentile against SFO percentile range



AIM Year 7 and 9: Reading

School no: 8818

School name: Horsham College

Source of data: Victorian Curriculum and Assessment Authority.

Explanation: The Achievement Improvement Monitor (AIM) was a statewide assessment program conducted each year up until and including 2007 for students in Years 3, 5, 7 and 9. This has now been replaced by NAPLAN. For more detailed AIM data, refer to the AIM Data Service website at <http://aimds.vcaa.vic.edu.au>.

Notes: * The school trendline is only plotted when there is data for each calendar year.
 ** % student participation = (students who participated in AIM / Feb enrolments) * 100

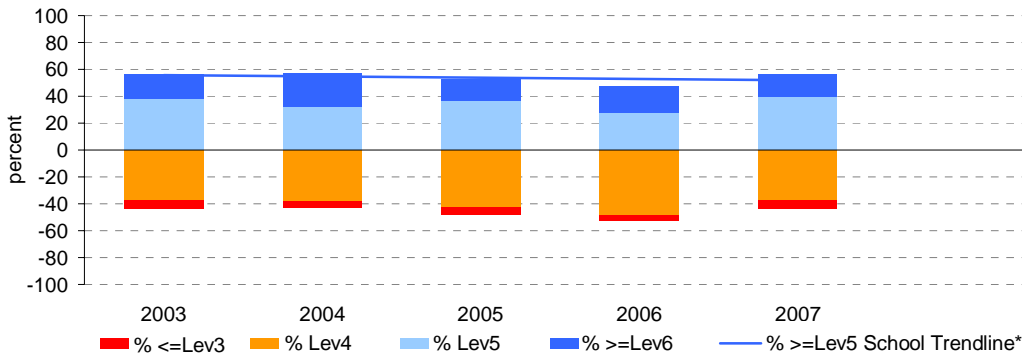
Year 7

	student participation		Percent of students by VELS level							Mean CSF / VELS Score	
	(n)	(%)**	Lev1	Lev2	Lev3	Lev4	Lev5	Lev6	Lev6E	School	State
2003	192	95	0	0	6	38	38	19	0	4.2	4.1
2004	165	96	0	0	5	38	32	25	0	4.3	4.2
2005	212	97	0	0	5	42	37	16	0	4.2	4.2
2006	175	95	0	0	4	49	27	20	0	4.2	4.2
2007	184	95	0	0	7	37	40	16	0	4.2	4.1

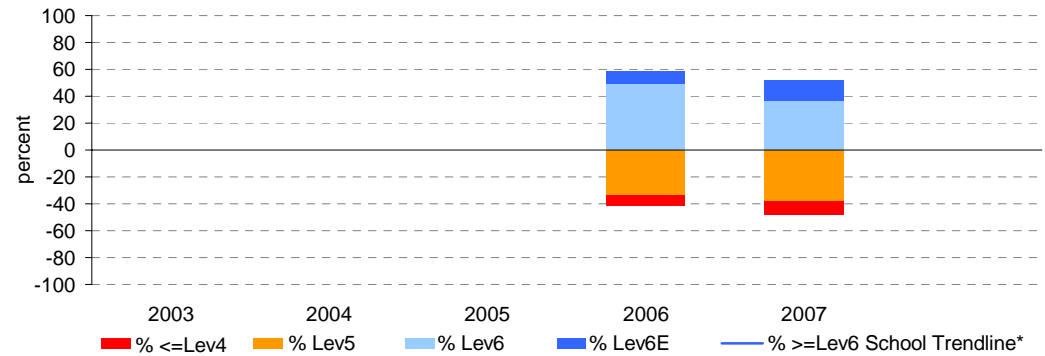
Year 9

	student participation		Percent of students by VELS level							Mean CSF / VELS Score	
	(n)	(%)**	Lev1	Lev2	Lev3	Lev4	Lev5	Lev6	Lev6E	School	State
2003											
2004											
2005											
2006	161	96	0	0	0	8	34	50	9	5.1	5.1
2007	215	92	0	0	0	10	38	37	15	5.1	5.1

Percent of students by VELS level

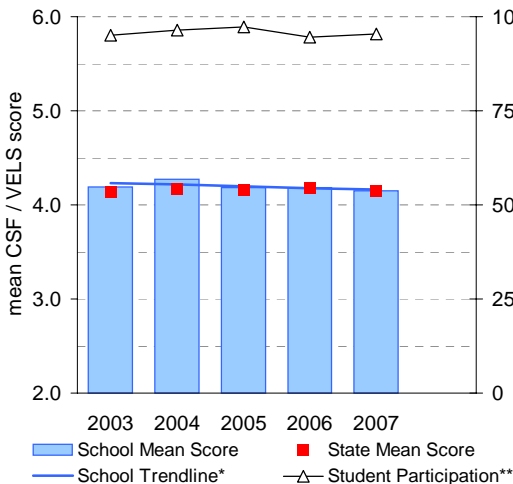


Percent of students by VELS level

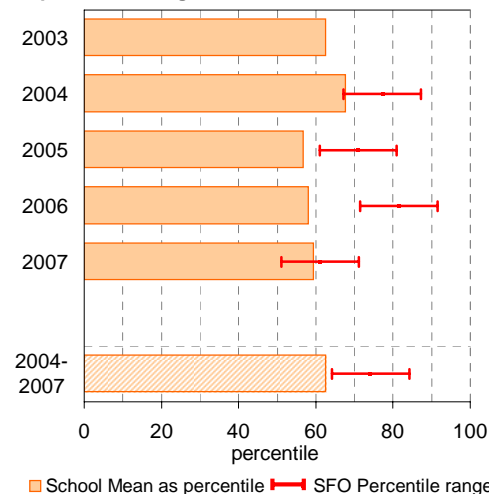


Year 7

School Mean against State Mean, including Participation

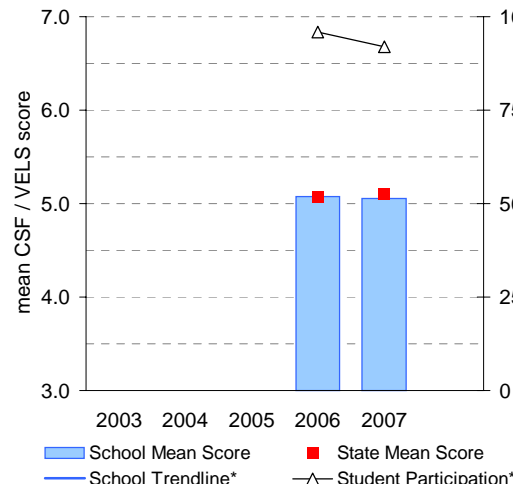


School Mean as percentile against SFO percentile range

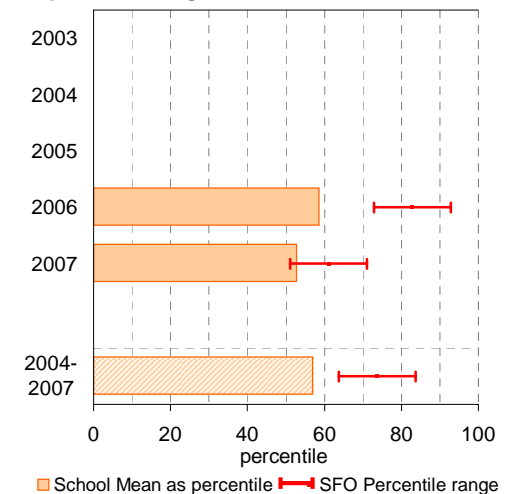


Year 9

School Mean against State Mean, including Participation



School Mean as percentile against SFO percentile range



AIM Year 7 and 9: Mathematics

School no: 8818

School name: Horsham College

Source of data: Victorian Curriculum and Assessment Authority.

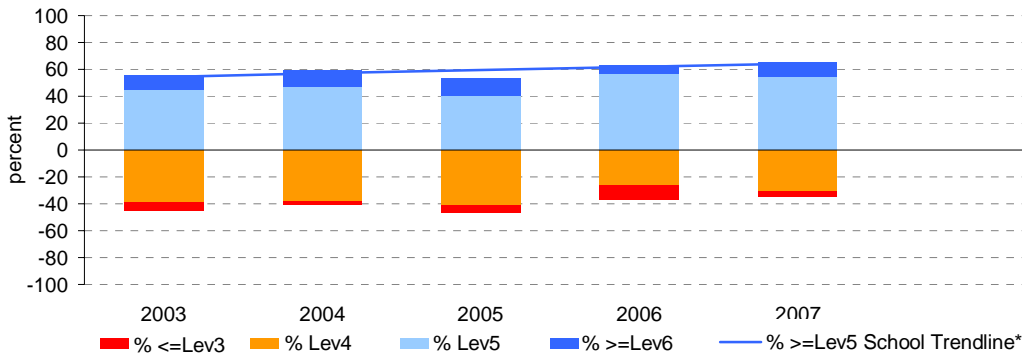
Explanation: The Achievement Improvement Monitor (AIM) was a statewide assessment program conducted each year up until and including 2007 for students in Years 3, 5, 7 and 9. This has now been replaced by NAPLAN. For more detailed AIM data, refer to the AIM Data Service website at <http://aimds.vcaa.vic.edu.au>.

Notes: * The school trendline is only plotted when there is data for each calendar year.
 ** % student participation = (students who participated in AIM / Feb enrolments) * 100

Year 7

	student participation		Percent of students by VELS level							Mean CSF / VELS Score	
	(n)	(%)**	Lev1	Lev2	Lev3	Lev4	Lev5	Lev6	Lev6E	School	State
2003	199	99	0	0	6	39	45	11	0	4.1	4.0
2004	167	98	0	0	2	38	47	13	0	4.2	4.0
2005	215	99	0	0	6	41	40	13	0	4.1	4.0
2006	178	96	0	0	10	26	57	7	0	4.1	4.0
2007	185	96	0	0	4	31	54	11	0	4.2	4.1

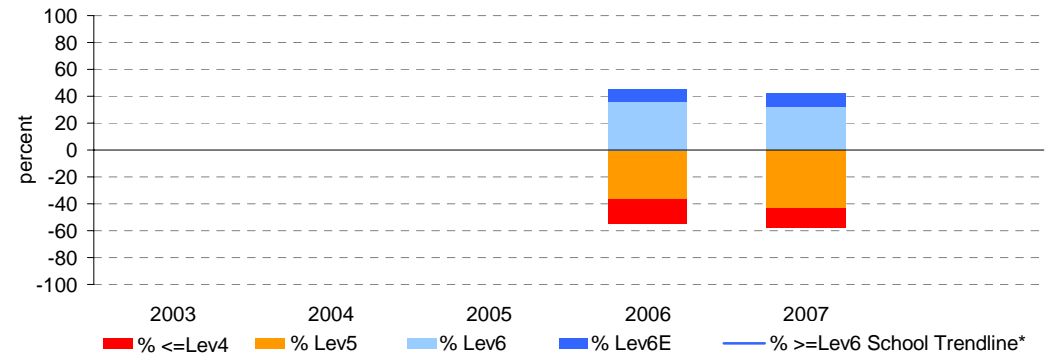
Percent of students by VELS level



Year 9

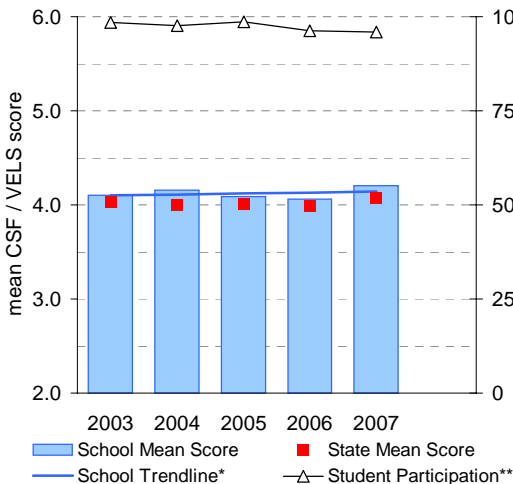
	student participation		Percent of students by VELS level							Mean CSF / VELS Score	
	(n)	(%)**	Lev1	Lev2	Lev3	Lev4	Lev5	Lev6	Lev6E	School	State
2003											
2004											
2005											
2006	162	96	0	0	0	19	36	36	9	4.9	4.8
2007	215	92	0	0	0	15	43	32	10	4.9	4.8

Percent of students by VELS level

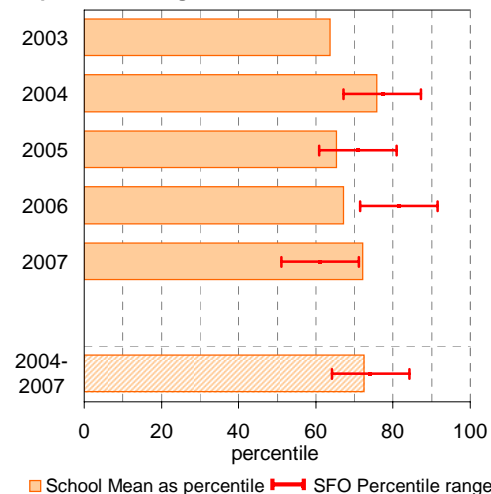


Year 7

School Mean against State Mean, including Participation

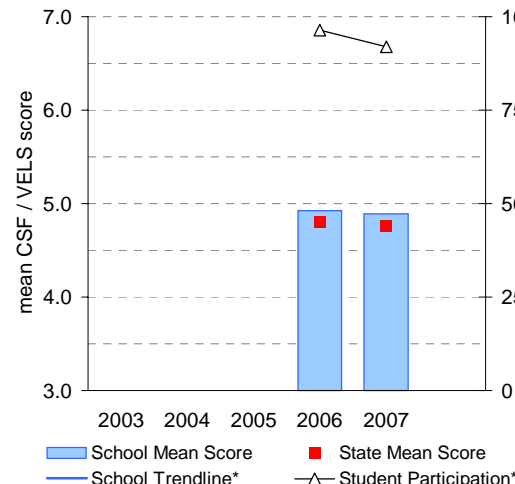


School Mean as percentile against SFO percentile range

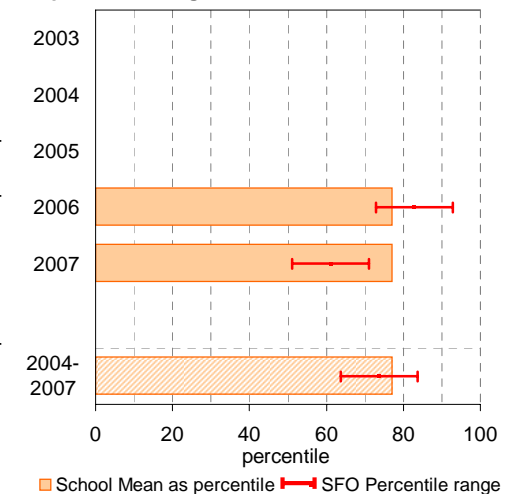


Year 9

School Mean against State Mean, including Participation



School Mean as percentile against SFO percentile range



VCE

School no: 8818

School name: Horsham College

Explanation: Only 2008 studies, which at least 1 student completed, are included.

Source of data: Victorian Curriculum and Assessment Authority.

Notes:	2004		2005		2006		2007		2008	
	No. of students	school mean	No. of students	school mean	No. of students	school mean	No. of students	school mean	No. of students	school mean
- After allstudy, English, Further Maths and Maths Methods, studies are listed in descending order of the number of students in the latest year.										
- From 2005, VET study scores are included.										
- From 2005, data is based on 'reported' study scores, not 'achieved' study scores.										
allstudy		29.3		29.2		29.1		29.4		28.3
English EN01	102	28.2	103	27.2	98	26.7	105	28.6	117	27.0
Further Mathematics MA07	62	30.5	60	30.5	57	30.4	66	31.8	75	30.1
Mathematical Methods MA08	21	28.0	29	28.8	35	28.0	37	28.2	29	26.0
Psychology PY03	50	31.4	54	29.9	46	29.6	58	28.3	44	28.5
Legal Studies LS03	21	32.6	19	31.3	9	30.9	22	29.2	31	26.3
Studio Arts SA03	15	31.3	17	32.5	23	31.8	19	30.7	31	30.0
Design & Tech. DT03	20	29.5	18	29.3	27	30.9	29	30.9	29	28.0
Health & Human Dev. HH03	31	30.7	43	26.6	22	30.6	24	28.3	29	30.6
Physical Ed. PE03	21	26.6	24	25.9	19	29.4	27	28.6	29	29.6
Outdoor & Environmental Studies OS03	23	29.4	12	26.8	19	28.4	12	27.8	22	28.1
Software Development IT03	12	29.8	21	30.6	27	30.8	14	31.9	22	28.9
IT Applications IT02	29	33.3	13	33.0	14	30.6	20	30.1	20	28.0
History (Revolutions) HI13	1	24.0	12	29.9	14	28.9	13	25.3	19	27.9
Biology BI03	23	26.3	22	33.6	22	29.8	26	31.3	17	30.1
Visual Communication & Design VC03	20	31.3	18	32.9	19	30.6	19	31.6	16	28.2
Chemistry CH03	18	25.1	21	24.7	15	24.7	18	29.2	15	25.1
Art AR03	12	27.6	3	37.0	15	30.5	1	49.0	13	28.7
Physics PH03	7	30.7	10	30.8	12	26.7	10	35.0	13	27.8
Specialist Mathematics MA09	7	25.7	8	28.0	6	26.8	13	29.3	12	28.2
Food & Tech. FY03	8	29.8	11	28.3	11	30.5	9	30.0	10	29.8
Accounting AC03	10	31.0	12	29.2	5	29.4	13	26.1	9	27.6
Literature LI01	11	24.9	14	29.3	12	27.5	11	26.0	8	31.0
German LO10	10	27.4	9	25.7	2	19.5	7	24.3	6	23.8
Dance DA03									3	19.0
Drama DR03			10	29.3	9	28.1			3	28.3
Furnishing (VCE VET) FN08					5	28.8	1	37.0	3	27.7
Music Performance: Group MC03	2	28.5	5	38.6			3	35.3	3	33.0
Information Technology (VCE VET) IN21									2	32.5
Business Management BM03									1	27.0
Community Services Work (VCE VET) CT11									1	26.0
Dutch LO07									1	42.0
Economics EC03	5	28.8							1	21.0
Engineering Studies (Cert. II) (VCE VET) EG07							1	30.0	1	32.0
English ESL EN09			1	32.0					1	24.0
Indonesian 1st Language LO13									1	22.0
Italian LO14	3	19.0	2	32.5			1	31.0	1	31.0

VCE

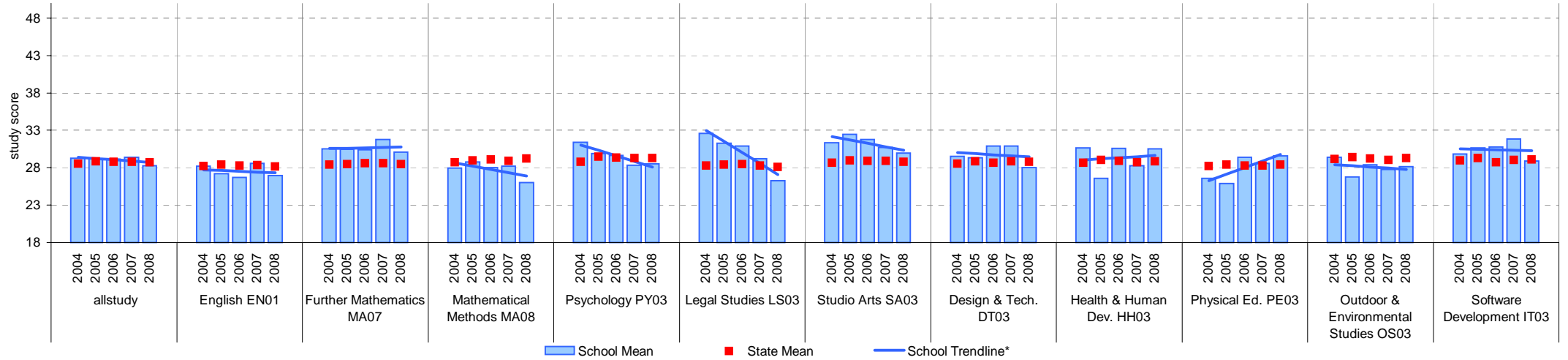
School no: 8818

School name: Horsham College

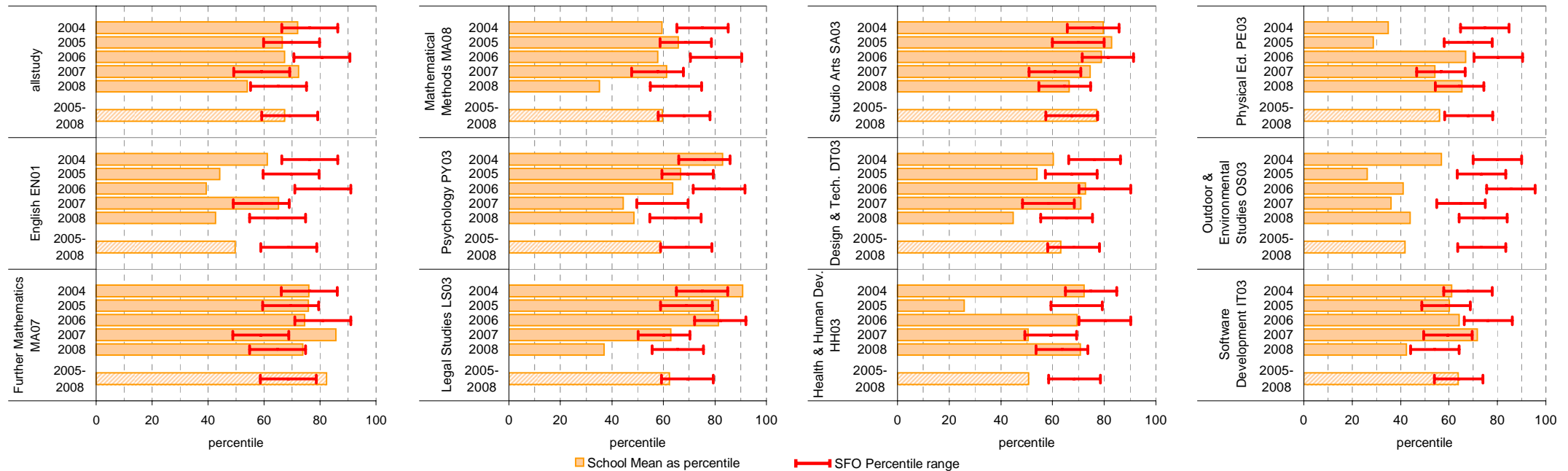
Source of data: Victorian Curriculum and Assessment Authority.

School Mean against State Mean

- Notes:
- * The school trendline is only plotted when there is data for each calendar year.
 - After allstudy, EN01, MA07 and MA08, the remaining studies are charted in order of the number of students who completed that study in 2008, from highest to lowest.
 - From 2005, VET study scores are included.
 - From 2005, data is based on 'reported' study scores, not the 'achieved' study scores.
 - Only the results of the 32 studies with the most students (apart from EN01, MA07 and MA08) are charted.



School Mean as percentile against SFO percentile range



VCE (cont'd)

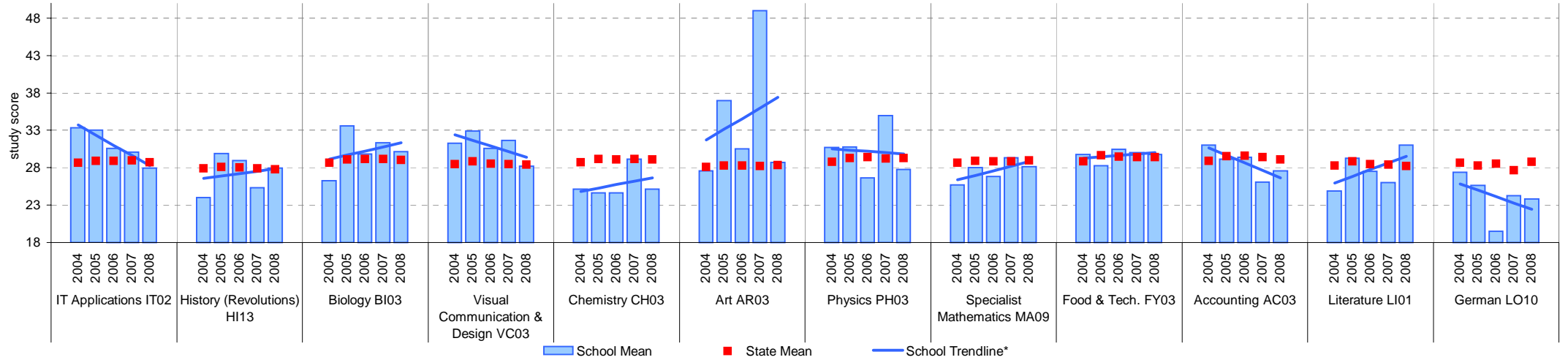
School no: 8818

School name: Horsham College

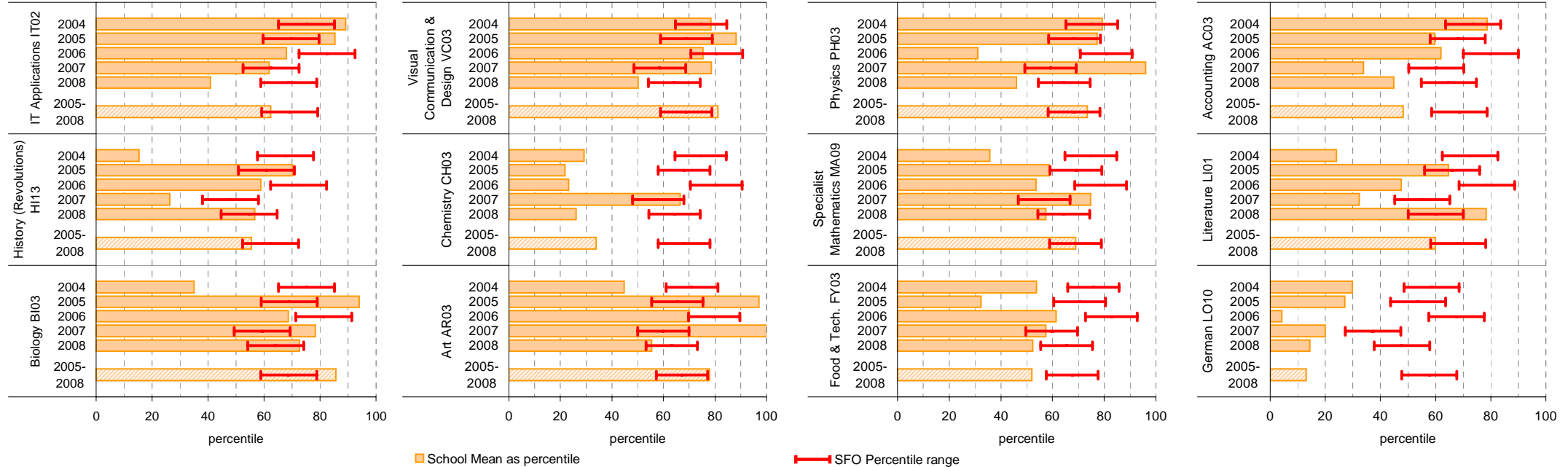
Source of data: Victorian Curriculum and Assessment Authority.

School Mean against State Mean

- Notes:
- * The school trendline is only plotted when there is data for each calendar year.
 - After allstudy, EN01, MA07 and MA08, the remaining studies are charted in order of the number of students who completed that study in 2008, from highest to lowest.
 - From 2005, VET study scores are included.
 - From 2005, data is based on 'reported' study scores, not the 'achieved' study scores.
 - Only the results of the 32 studies with the most students (apart from EN01, MA07 and MA08) are charted.



School Mean as percentile against SFO percentile range



VCE (cont'd)

School no: 8818

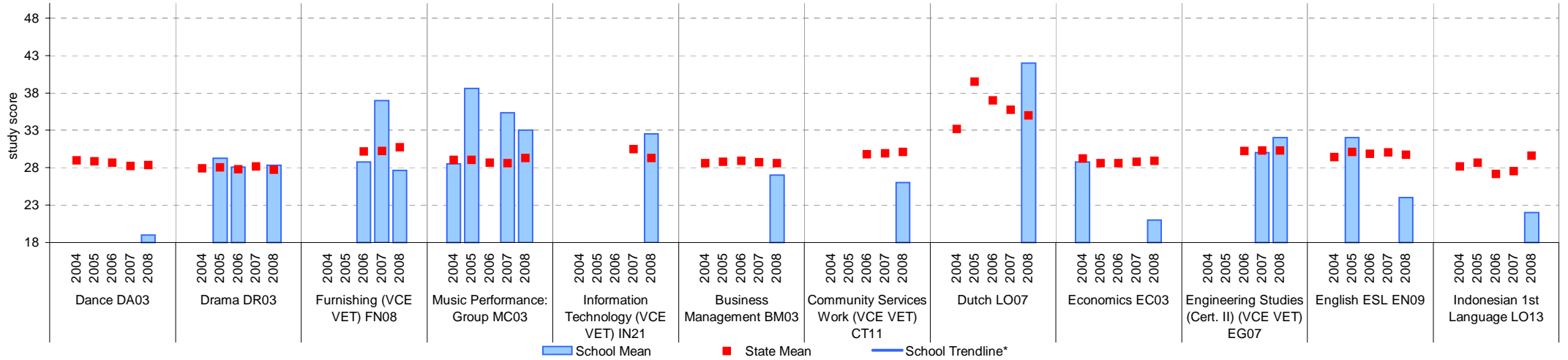
School name: Horsham College

Source of data: Victorian Curriculum and Assessment Authority.

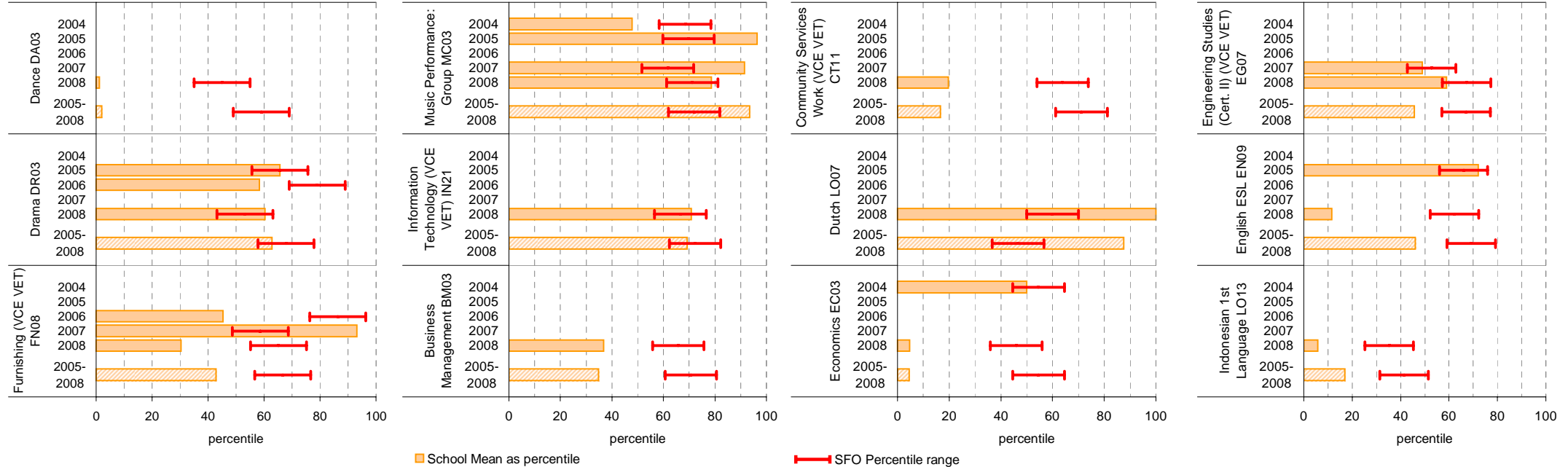
School Mean against State Mean

Notes: * The school trendline is only plotted when there is data for each calendar year.

- After allstudy, EN01, MA07 and MA08, the remaining studies are charted in order of the number of students who completed that study in 2008, from highest to lowest.
- From 2005, VET study scores are included.
- From 2005, data is based on 'reported' study scores, not the 'achieved' study scores.
- Only the results of the 32 studies with the most students (apart from EN01, MA07 and MA08) are charted.



School Mean as percentile against SFO percentile range

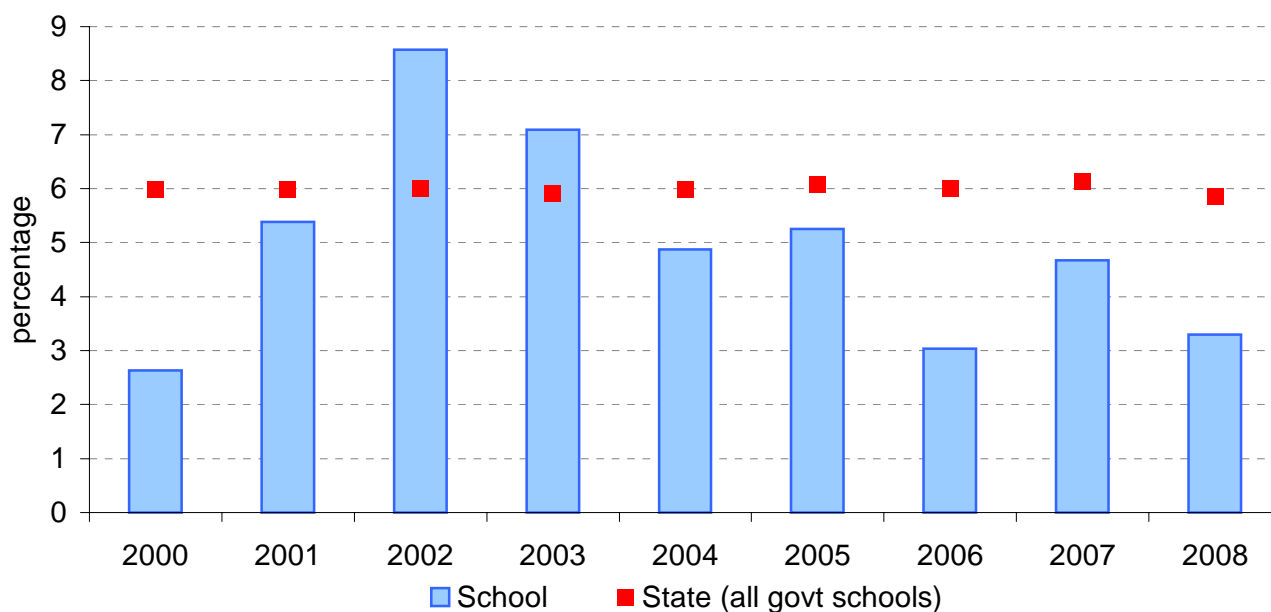


VCE: Study Scores of 40 or more

School no:	8818
School name:	Horsham College
Explanation:	Of all VCE study scores, the percentage that were 40 or more.
Source of data:	Victorian Curriculum and Assessment Authority.

Year	School		State (all govt schools)
	Total study scores	% 40 or more*	% 40 or more
2000	607	2.6	6.0
2001	650	5.4	6.0
2002	595	8.6	6.0
2003	620	7.1	5.9
2004	554	4.9	6.0
2005	590	5.3	6.1
2006	560	3.0	6.0
2007	600	4.7	6.1
2008	638	3.3	5.9

VCE percentage of study scores of 40 or more*, 2000 to 2008



Note:

- * Prior to 2005, this data may not match the information published in *The Age*. Data presented on this page prior to 2005 does not include study scores from the small number of VET studies that are given study scores.
- From 2005, VET study scores are included.
- From 2005, data is based on 'reported' study scores, not 'achieved' study scores.

VET

School no: 8818
School name: Horsham College
Source of data: Victorian Curriculum and Assessment Authority.

Notes: * - The school trendline is only plotted when there is data for each calendar year.

1 - UOC = Unit(s) of Competence.

2 - % students based on yr10, 11 & 12 August enrolments.

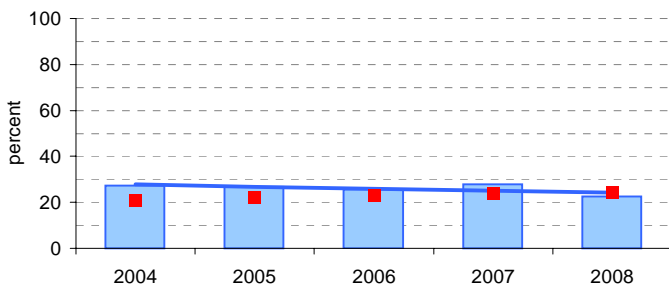
3 - Only includes students undertaking at least 1 UOC.

More detailed information is available on the VASS system provided by VCAA.

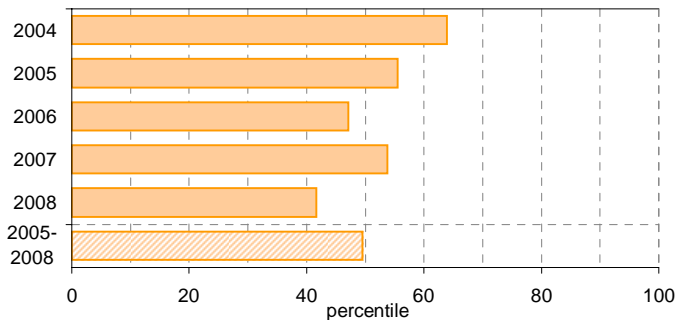
Participation						Completion			
School					State		School		State
Year	Level	No. students undertaking at least 1 UOC ¹	% students ² undertaking at least 1 UOC ¹	Avg no. UOCs ¹ undertaken per student ³	% students ² undertaking at least 1 UOC ¹	Avg no. UOCs ¹ undertaken per student ³	No. UOCs ¹ with satisfactory result	% UOCs ¹ with satisfactory result	% UOCs ¹ with satisfactory result
2004	10	36	21.8	11.4	20.7	11.9	312	75.9	71.3
	11	52	36.9	12					
	12	28	23.7	12.3					
	10-12	116	27.4	11.9					
2005	10	32	20.8	9.6	22.3	11.9	203	66.3	72.6
	11	53	36.1	12.2					
	12	28	22.8	9.5					
	10-12	113	26.7	10.8					
2006	10	51	25.5	8.6	23.0	12.0	304	69.7	75.6
	11	41	30	9.3					
	12	24	20.7	8					
	10-12	116	25.6	8.7					
2007	10	45	28.2	9.7	23.8	11.7	233	53.6	76.4
	11	63	35.9	8.4					
	12	18	15.5	6.9					
	10-12	126	27.9	8.6					
2008	10	51	22.9	7.6	24.6	12.0	268	69.4	76.7
	11	49	31.1	9.3					
	12	19	12.9	8.1					
	10-12	119	22.5	8.4					

Participation - % Yr10-12 students² undertaking at least 1 UOC¹

School against State

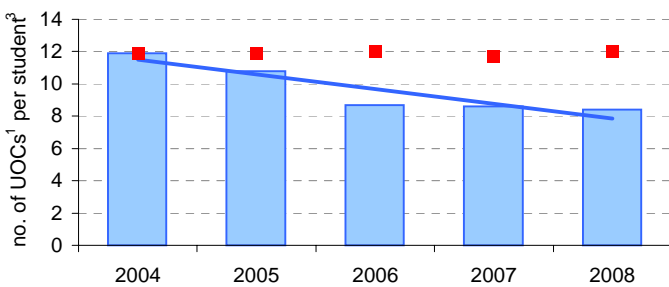


School as percentile

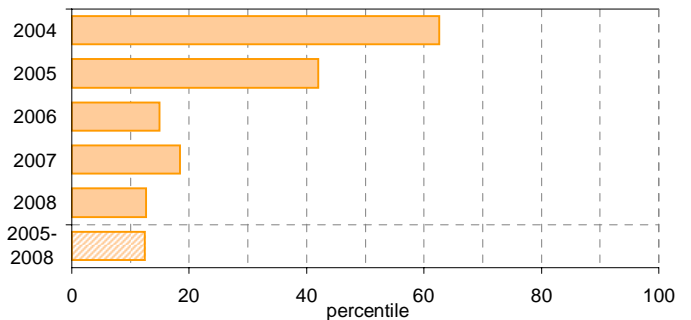


Avg no. UOCs¹ undertaken per student³

School Mean against State Mean

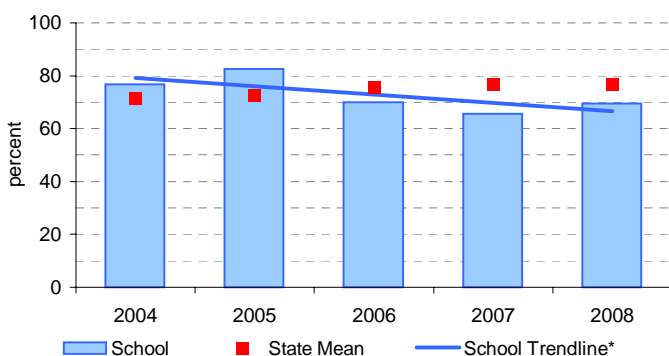


School Mean as percentile

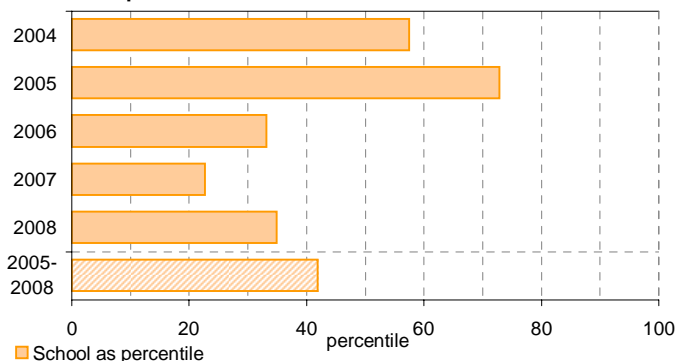


Completion - % UOCs¹ with satisfactory result

School against State



School as percentile



VCAL

School no: 8818
School name: Horsham College
Explanation:

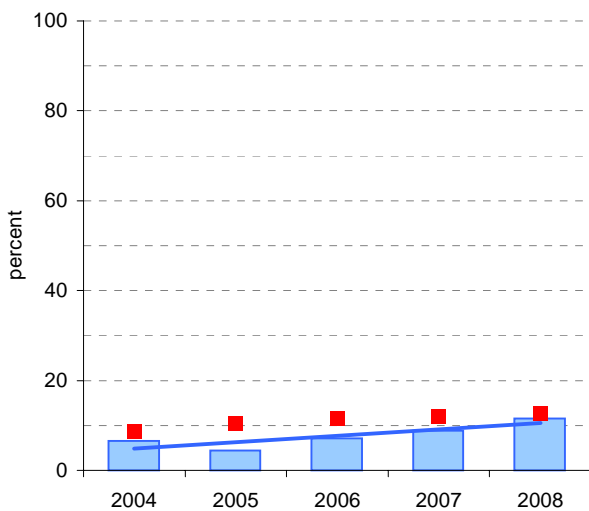
'No. of VCAL credits undertaken' is calculated by summing the number of credits undertaken by each VCAL student across all VCAL students.
 The data contained in this page is for all VCAL strands and levels combined.

Source of data: Victorian Curriculum and Assessment Authority.
 More detailed information is available on the VASS system provided by VCAA.

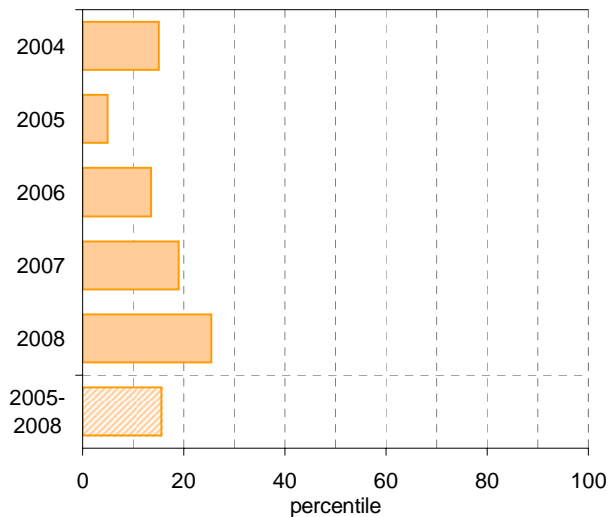
Notes: * - The school trendline is only plotted when there is data for each calendar year.
 1 - No. and % students based on yr11 & 12 August enrolments.

Participation						Completion		
		School		State		School		State
Year	Year Level	No. students ¹	No. students undertaking VCAL	% students ¹ undertaking VCAL	% students ¹ undertaking VCAL	No. VCAL unit credits undertaken	% satisfactory completion of VCAL credits	% satisfactory completion of VCAL credits
2004	11-12	259	17	6.6	8.6	68	61.8	70.4
2005	11-12	269.6	12	4.4	10.4	58	87.9	72.9
2006	11-12	252.5	18	7.1	11.5	87	62.1	77.7
2007	11-12	292	26	8.9	12.0	150	48.7	76.5
2008	11-12	305	35	11.5	12.7	222	43.2	75.8

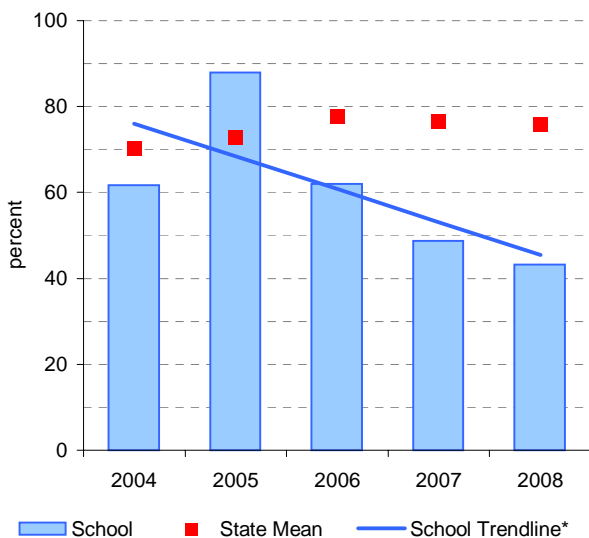
Participation - % Yr11-12 students¹ undertaking VCAL School against State



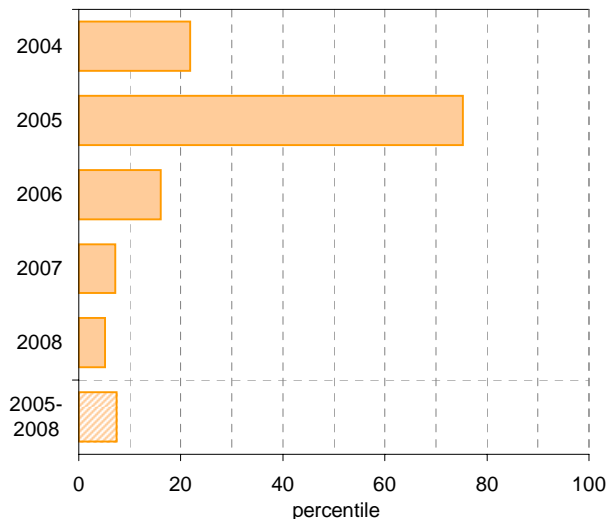
School as percentile



Completion - % satisfactory completion of VCAL credits School against State



School as percentile



■ School
 ■ State Mean
 — School Trendline*
 ■ School as percentile

Teacher Assessment of Student Progress (PSD students)

School no: 8818

School name: Horsham College

Explanation: Teachers assess their students' progress against the 8 VELS Domains / CSF KLAs using a 6-point scale (students in special schools and those who cannot be assessed against the VELS / CSF).

Source of data: Data transmitted from school to DEECD via an online web-form.

	No progress (%)	Little progress (%)	Satisfactory progress (%)	Good progress (%)	Very good progress (%)	Excellent progress (%)	Total students assessed ¹ (no.)
--	--------------------	---------------------------	---------------------------------	-------------------------	------------------------------	------------------------------	--

2004 (by CSF KLA)

English
Mathematics
Science
Technology
The Arts
H&PE
SOSE

2005 (by CSF KLA)

English
Mathematics
Science
Technology
The Arts
H&PE
SOSE

2006 (by VELS Domain)

English
Mathematics
Science
ICT
The Arts
H&PE
Civics & Citizenship

2007 (by VELS Domain)

English
Mathematics
Science
ICT
The Arts
H&PE
Civics & Citizenship

2008 (by VELS Domain)

English
Mathematics
Science
ICT
The Arts
H&PE
Civics & Citizenship

2007 Secondary state benchmarks (by VELS Domain)*

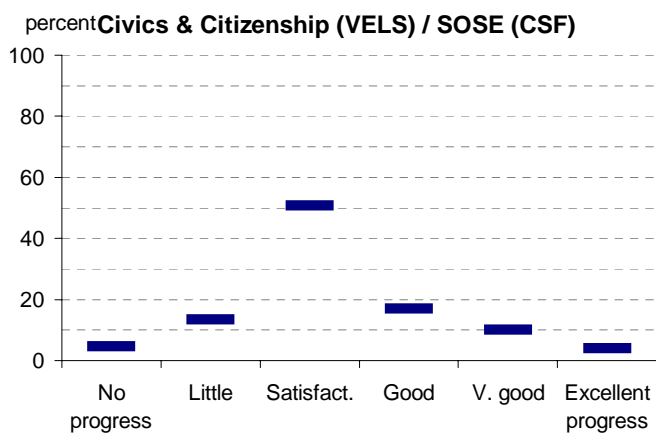
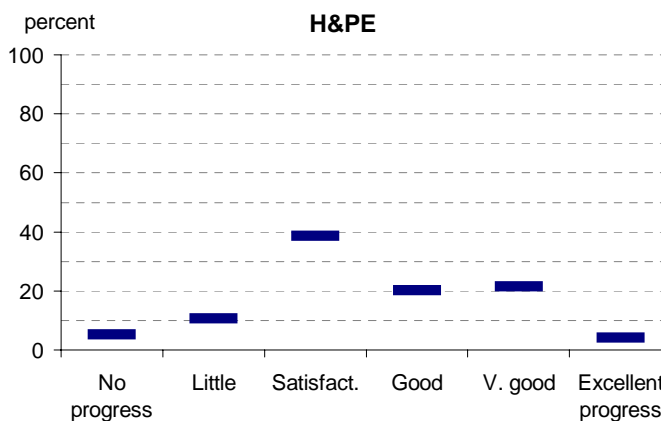
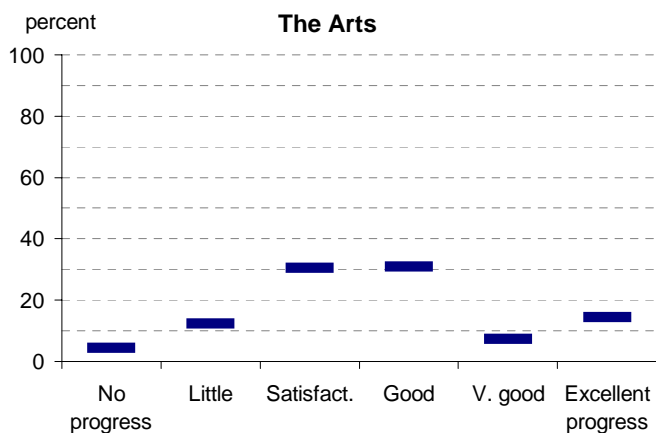
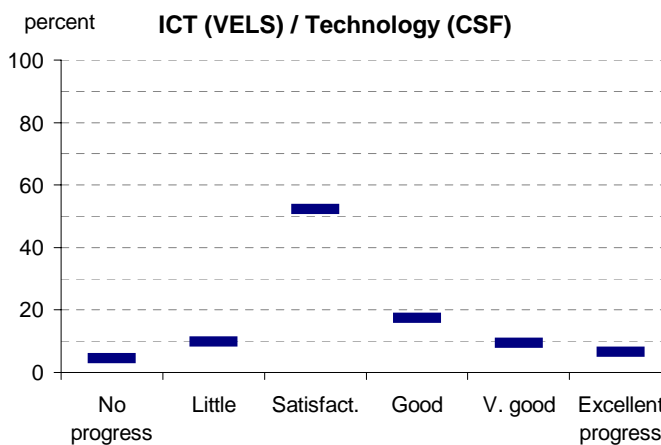
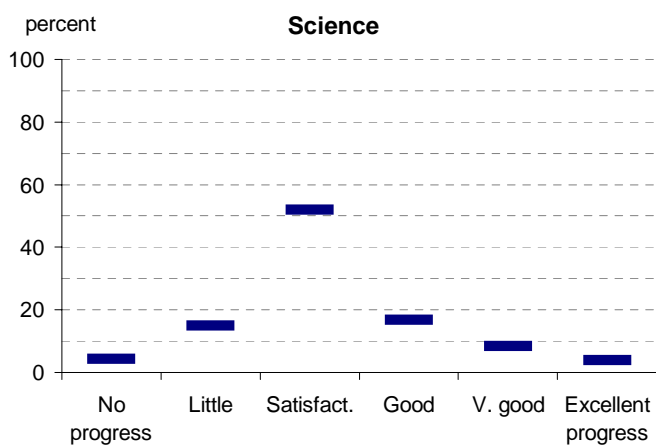
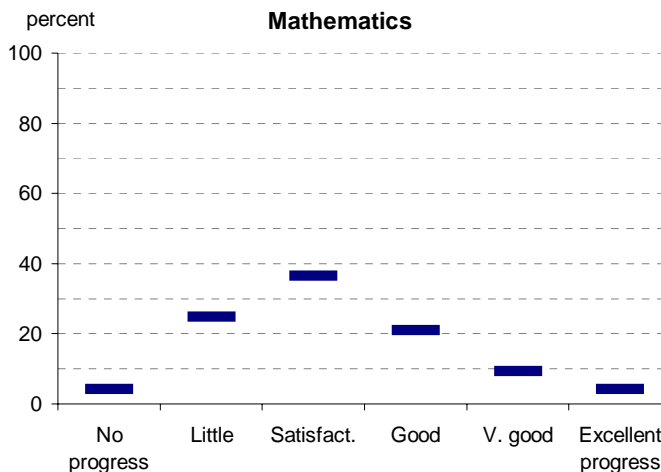
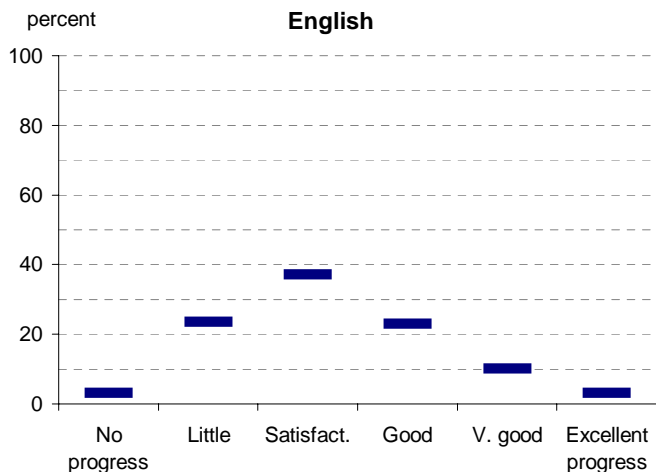
English	3	24	37	23	10	3
Mathematics	4	25	36	21	9	4
Science	4	15	52	17	8	4
ICT	5	10	52	17	9	7
The Arts	4	12	31	31	7	14
H&PE	5	11	39	20	21	4
Civics & Citizenship	5	13	51	17	10	4

Notes: ¹ If schools provided percentages only, it is not possible to report the number of students assessed. In these cases, the total percentage (100) will be shown.

* 2008 benchmarks will be calculated in August, when data from all schools has been submitted.

Teacher Assessment of Student Progress (PSD students)

School no: 8818
 School name: Horsham College



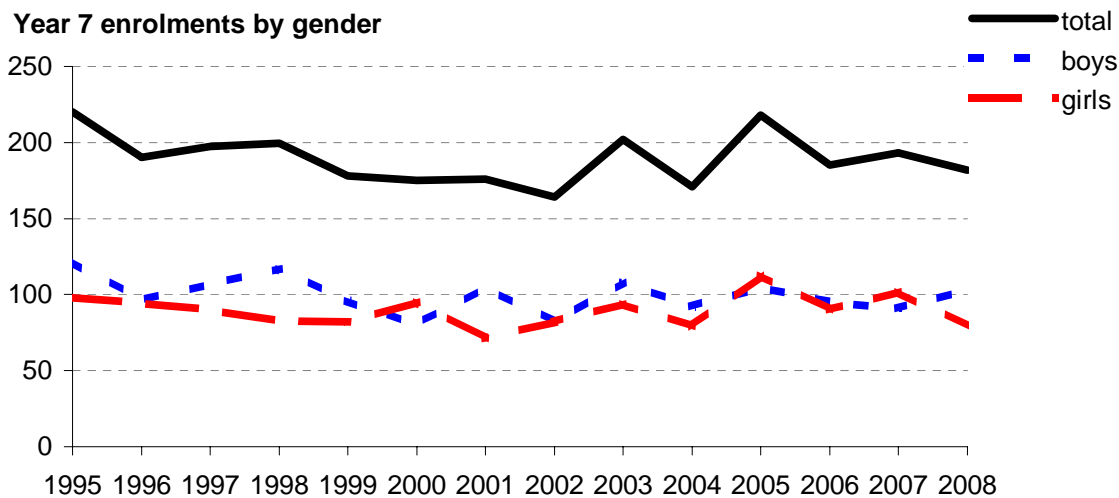
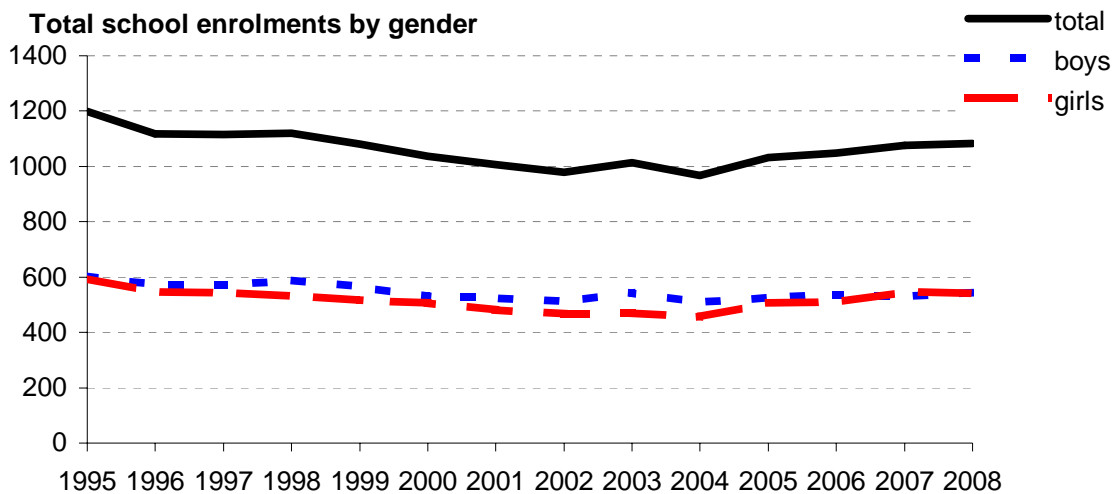
- 2004 (by CSF KLA)
- 2005 (by CSF KLA)
- 2006 (by VELS Domain)
- 2007 (by VELS Domain)
- 2008 (by VELS Domain)
- 2007 Secondary state benchmarks (by VELS Domain)*

Notes: * 2008 benchmarks will be calculated in August, when data from all schools has been submitted.

Enrolments

School no: 8818
School name: Horsham College
Explanation: Enrolments at February census.
Source of data: February census.

Year	Total school enrolment			Prep enrolment			Year 7 enrolments		
	boys	girls	total	boys	girls	total	boys	girls	total
1995	605	594	1199				122	98	220
1996	571	546	1117				96	94	190
1997	572	543	1115				107	90	197
1998	588	532	1120				117	82	199
1999	565	515	1080				96	82	178
2000	530	507	1037				80	95	175
2001	525	481	1006				105	71	176
2002	511	467	978				82	82	164
2003	543	471	1014				108	94	202
2004	510	457	967				92	79	171
2005	525	506	1031				105	113	218
2006	538	510	1047				95	90	185
2007	531	545	1076				91	102	193
2008	543	541	1084				103	79	182



Apparent Student Retention

Note: * The school trendline is only plotted when there is data for each calendar year.

School no: 8818

School name: Horsham College

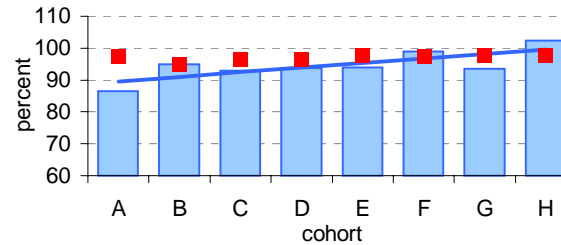
Explanation: Apparent retention rates are based on enrolments. For example, Year 7Feb-12Aug apparent retention refers to year 12 enrolment of students in full-time school education in August expressed as a percentage of year 7 enrolments in February five years earlier.

Source of data: February and August census.

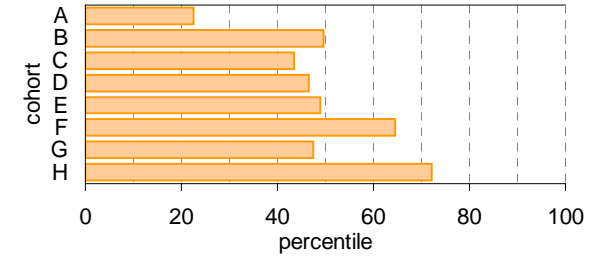
Year 7 (Feb) - 10 (Aug)

Cohorts:	A	B	C	D	E	F	G	H
Year 7	1998	1999	2000	2001	2002	2003	2004	2005
Year 10	2001	2002	2003	2004	2005	2006	2007	2008
Year 7 (Feb)	no. 199.3	178	175	176	164	202	171	218
Year 10 (Aug)	no. 172.3	169.1	162.8	164.9	154	199.9	159.8	223
Year 7 (Feb) - 10 (Aug)	% 86.5	95.0	93.0	93.7	93.9	99.0	93.5	102.3
State mean	% 97.3	95.0	96.6	96.3	97.6	97.3	97.4	97.6

School against State

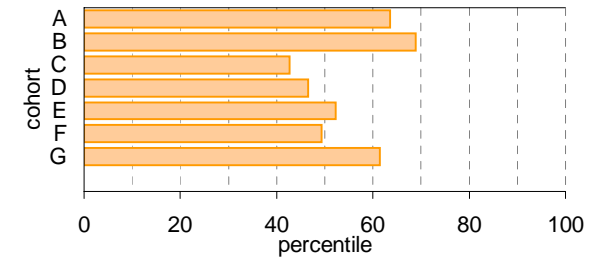
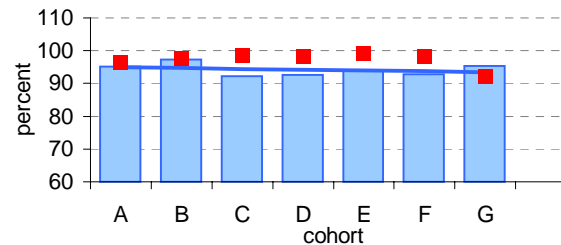


School as percentile



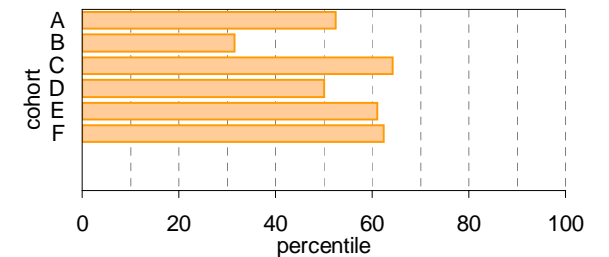
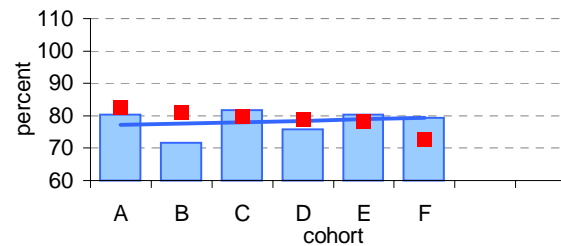
Year 10 (Aug) - 11 (Feb)

Cohorts:	A	B	C	D	E	F	G
Year 10	2001	2002	2003	2004	2005	2006	2007
Year 11	2002	2003	2004	2005	2006	2007	2008
Year 10 (Aug)	no. 172.3	169.1	162.8	164.9	154	199.9	159.8
Year 11 (Feb)	no. 164	164.6	150	152.7	144.8	185.6	152.3
Year 10 (Aug) - 11 (Feb)	% 95.2	97.3	92.1	92.6	94.0	92.8	95.3
State mean	% 96.2	97.7	98.7	98.2	99.0	98.2	92.0



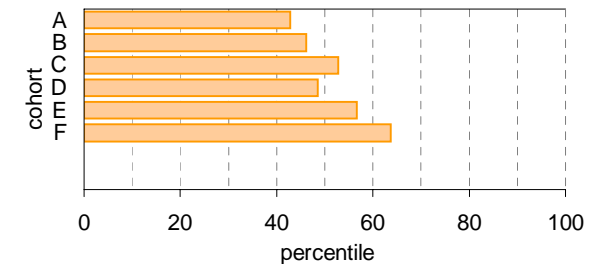
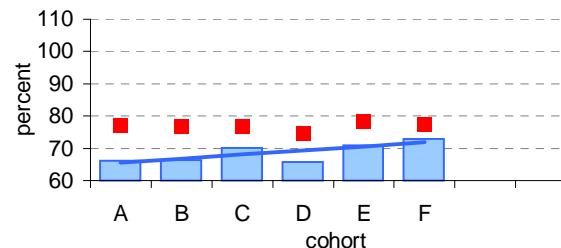
Year 11 (Feb) - 12 (Aug)

Cohorts:	A	B	C	D	E	F
Year 11	2002	2003	2004	2005	2006	2007
Year 12	2003	2004	2005	2006	2007	2008
Year 11 (Feb)	no. 164	164.6	150	152.7	144.8	185.6
Year 12 (Aug)	no. 131.9	118	122.6	115.7	116.4	147.4
Year 11 (Feb) - 12 (Aug)	% 80.4	71.7	81.7	75.8	80.4	79.4
State mean	% 82.5	81.0	79.8	78.8	78.1	72.7



Year 7 (Feb) - 12 (Aug)

Cohorts:	A	B	C	D	E	F
Year 7	1998	1999	2000	2001	2002	2003
Year 12	2003	2004	2005	2006	2007	2008
Year 7 (Feb)	no. 199.3	178	175	176	164	202
Year 12 (Aug)	no. 131.9	118	122.6	115.7	116.4	147.4
Year 7 (Feb) - 12 (Aug)	% 66.2	66.3	70.1	65.7	71.0	73.0
State mean	% 77.2	76.9	76.8	74.6	78.2	77.5



Legend: School (blue bar), State Mean (red square), School Trendline* (blue line)

Legend: School as percentile (orange bar)

Real Student Retention

Notes: * The school trendline is only plotted when there is data for each calendar year.
 ^ 2008 benchmarks will be calculated in August, when data from all schools has been submitted.

School no: 8818

School name: Horsham College

Explanation: Real retention rates show the percentage of students who have been enrolled at the same school over a period of time.

For example, the formula for the real retention rate for Year 7Feb to 10Aug for school X in 2008 is as follows:

$$\frac{\text{(no. of students enrolled in Yr10 in school X as at August 2008 census and who enrolled prior to 1/3/2005, ie, enrolled in school X at beginning of Yr7)}}{\text{(enrolments in Yr7 Feb in 2005 according to census)}}$$

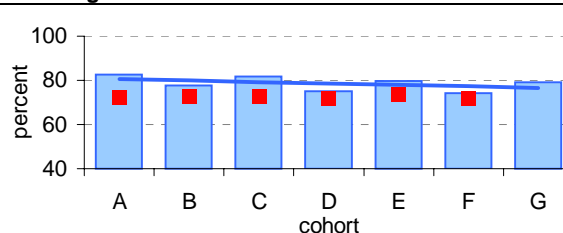
By definition, real school retention will be less than or equal to 100% (assuming there are no students repeating the year, or accelerating through years). Generally, real school retention rates are affected by students transferring to another school & students exiting the school system. They are a measure of the 'holding power' of the school.

Source of data: Data retrieved electronically from CASES21 at time of rollover.

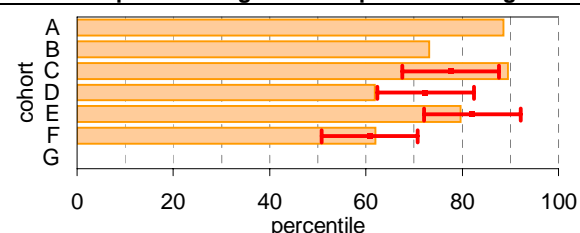
Year 7 (Feb) - 10 (Aug)

	Cohorts:	A	B	C	D	E	F	G
Year 7		1999	2000	2001	2002	2003	2004	2005
Year 10		2002	2003	2004	2005	2006	2007	2008
Year 7 (Feb)	no.	178	175	176	164	202	171	218
Year 10 (Aug)	no.	147	135.7	144	123	161	127	172.8
Year 7 (Feb) - 10 (Aug)	%	82.6	77.5	81.8	75.0	79.7	74.3	79.3
State mean^	%	72.5	72.7	72.8	71.7	73.5	71.5	

School against State^

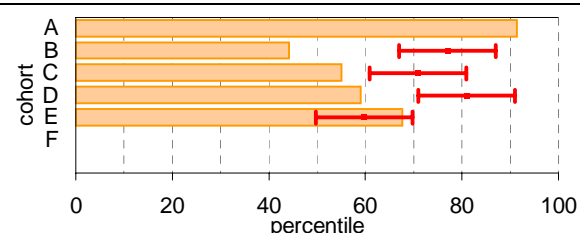
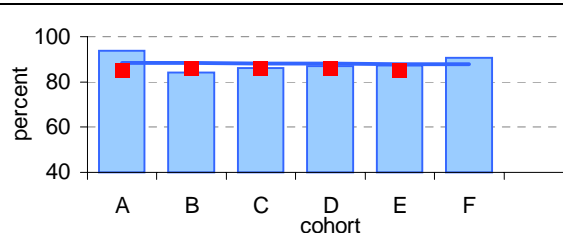


School as percentile against SFO percentile range^



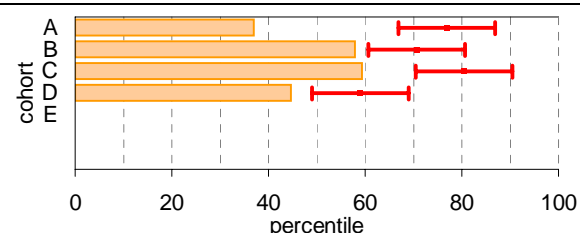
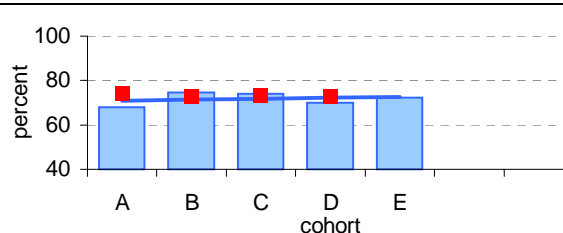
Year 10 (Aug) - 11 (Feb)

	Cohorts:	A	B	C	D	E	F
Year 10		2002	2003	2004	2005	2006	2007
Year 11		2003	2004	2005	2006	2007	2008
Year 10 (Aug)	no.	169.1	162.8	164.9	154	199.9	159.8
Year 11 (Feb)	no.	158.6	137	142	133.8	174.6	145
Year 10 (Aug) - 11 (Feb)	%	93.8	84.2	86.1	86.9	87.3	90.7
State mean^	%	84.9	85.9	85.9	86.1	85.1	



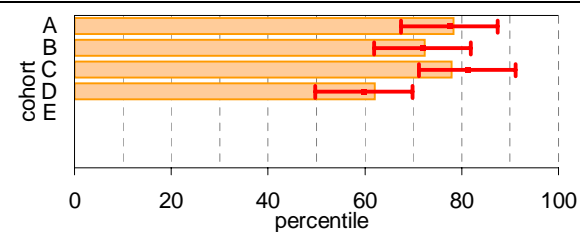
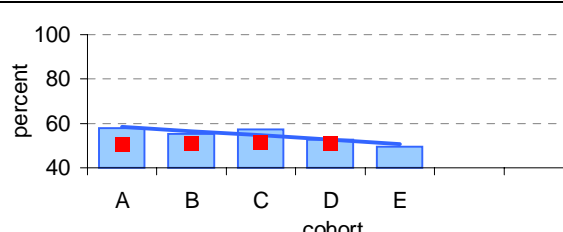
Year 11 (Feb) - 12 (Aug)

	Cohorts:	A	B	C	D	E
Year 11		2003	2004	2005	2006	2007
Year 12		2004	2005	2006	2007	2008
Year 11 (Feb)	no.	164.6	150	152.7	144.8	185.6
Year 12 (Aug)	no.	111.9	111.9	113	101.5	134.4
Year 11 (Feb) - 12 (Aug)	%	68.0	74.6	74.0	70.1	72.4
State mean^	%	73.9	73.0	73.5	72.5	



Year 7 (Feb) - 12 (Aug)

	Cohorts:	A	B	C	D	E
Year 7		1999	2000	2001	2002	2003
Year 12		2004	2005	2006	2007	2008
Year 7 (Feb)	no.	178	175	176	164	202
Year 12 (Aug)	no.	102.9	96.9	101	86.5	100.3
Year 7 (Feb) - 12 (Aug)	%	57.8	55.4	57.4	52.7	49.7
State mean^	%	50.6	51.0	51.1	50.8	



Legend: School (blue bar), State Mean (red square), School Trendline* (blue line)

Legend: School as percentile (orange bar), SFO Percentile range (red line with arrows)

Exit Destination: Year 10

School no: 8818

School name: Horsham College

Explanation: The destination of students who left during or at the end of Year 10.

Source of data: Data retrieved electronically from CASES21 following February census.

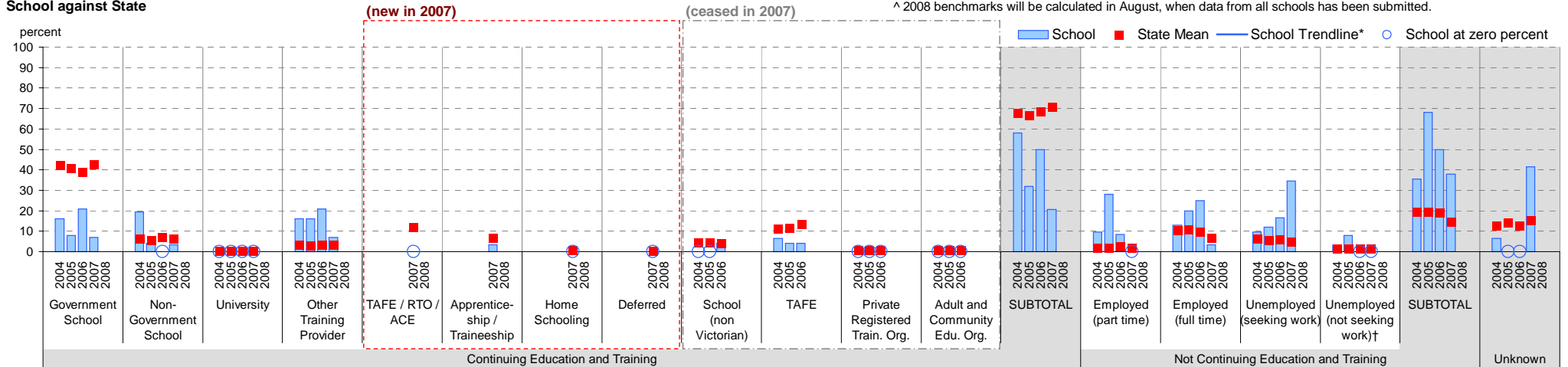
Exit Destination	2004		2005		2006		2007		2008		2007 state^
	n	%	n	%	n	%	n	%	n	%	%
Continuing education and training											
Government School	5	16.1	2	8.0	5	20.8	2	6.9			42.5
Non-Government School	6	19.4	1	4.0			1	3.4			6.0
University											0.1
Other Training Provider	5	16.1	4	16.0	5	20.8	2	6.9			3.3
(new in 2007)											
TAFE / RTO / ACE											11.7
Apprenticeship / Traineeship							1	3.4			6.4
Home Schooling											0.4
Deferred											0.0
(ceased in 2007)											
School (non Victorian)					1	4.2					
TAFE	2	6.5	1	4.0	1	4.2					
Private Registered Training Organisation											
Adult and Community Education Organisation											
SUBTOTAL	18	58.1	8	32.0	12	50.0	6	20.7			70.5
Not continuing education and training											
Employed (part time)	3	9.7	7	28.0	2	8.3					1.7
Employed (full time)	4	12.9	5	20.0	6	25.0	1	3.4			6.5
Unemployed (seeking work)	3	9.7	3	12.0	4	16.7	10	34.5			4.8
Unemployed (not seeking work)†	1	3.2	2	8.0							1.3
SUBTOTAL	11	35.5	17	68.0	12	50.0	11	37.9			14.3
Unknown	2	6.5					12	41.4			15.2
TOTAL	31	100.0	25	100.0	24	100.0	29	100.0			100.0
Total Yr 10 February enrolment	162		157		199		159				

Notes: * The school trendline is being trialled. It is only plotted when there is data for each calendar year.

† Includes deceased students.

^ 2008 benchmarks will be calculated in August, when data from all schools has been submitted.

School against State



Exit Destination: Year 11

School no: 8818

School name: Horsham College

Explanation: The destination of students who left during or at the end of Year 11.

Source of data: Data retrieved electronically from CASES21 following February census.

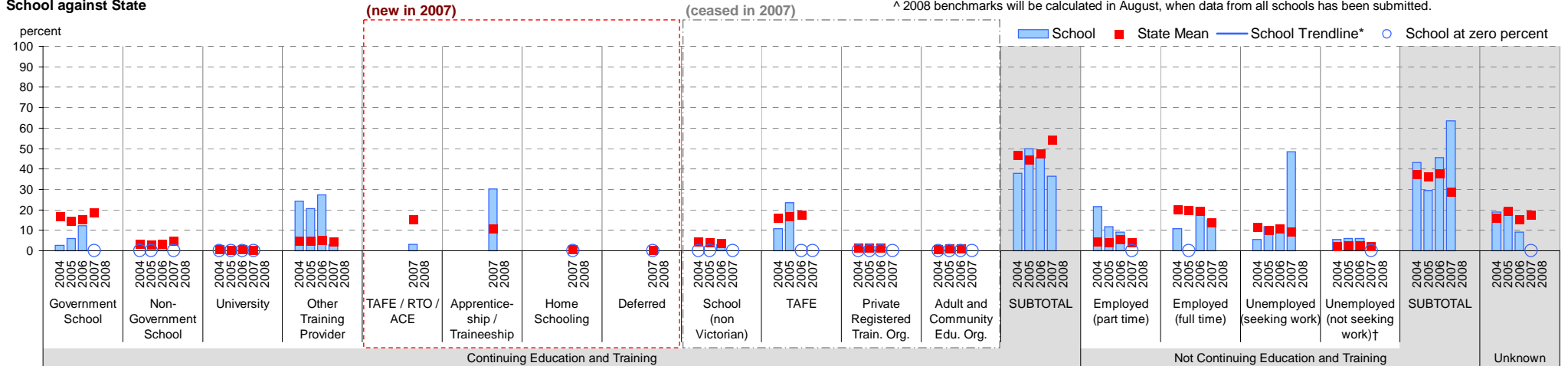
Exit Destination	2004		2005		2006		2007		2008		2007 state [^]
	n	%	n	%	n	%	n	%	n	%	%
Continuing education and training											
Government School	1	2.7	2	5.9	4	12.1					18.6
Non-Government School					1	3.0					4.4
University											0.3
Other Training Provider	9	24.3	7	20.6	9	27.3	1	3.0			4.3
(new in 2007)											
TAFE / RTO / ACE							1	3.0			15.0
Apprenticeship / Traineeship							10	30.3			10.7
Home Schooling											0.4
Deferred											0.0
(ceased in 2007)											
School (non Victorian)					1	3.0					
TAFE	4	10.8	8	23.5							
Private Registered Training Organisation											
Adult and Community Education Organisation											
SUBTOTAL	14	37.8	17	50.0	15	45.5	12	36.4			53.9
Not continuing education and training											
Employed (part time)	8	21.6	4	11.8	3	9.1					4.1
Employed (full time)	4	10.8			7	21.2	5	15.2			13.7
Unemployed (seeking work)	2	5.4	4	11.8	3	9.1	16	48.5			9.1
Unemployed (not seeking work)†	2	5.4	2	5.9	2	6.1					1.8
SUBTOTAL	16	43.2	10	29.4	15	45.5	21	63.6			28.7
Unknown	7	18.9	7	20.6	3	9.1					17.4
TOTAL	37	100.0	34	100.0	33	100.0	33	100.0			100.0
Total Yr 11 February enrolment	150		153		145		186				

Notes: * The school trendline is being trialled. It is only plotted when there is data for each calendar year.

† Includes deceased students.

^ 2008 benchmarks will be calculated in August, when data from all schools has been submitted.

School against State



Exit Destination: Students who left Year 12 before completing the year

School no: 8818

School name: Horsham College

Explanation: The destination of students who left prior to completing Year 12.

Source of data: Data retrieved electronically from CASES21 following February census.

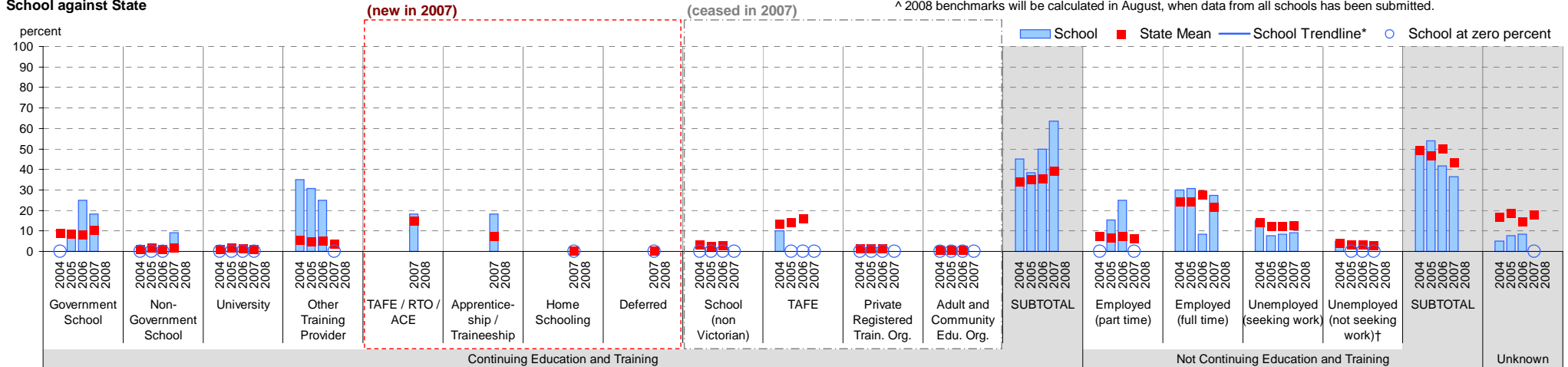
Exit Destination	2004		2005		2006		2007		2008		2007 state^
	n	%	n	%	n	%	n	%	n	%	%
Continuing education and training											
Government School			1	7.7	3	25.0	2	18.2			10.2
Non-Government School							1	9.1			1.8
University											1.1
Other Training Provider	7	35.0	4	30.8	3	25.0					3.5
(new in 2007)											
TAFE / RTO / ACE							2	18.2			14.7
Apprenticeship / Traineeship							2	18.2			7.5
Home Schooling											
Deferred											0.1
(ceased in 2007)											
School (non Victorian)											
TAFE	2	10.0									
Private Registered Training Organisation											
Adult and Community Education Organisation											
SUBTOTAL	9	45.0	5	38.5	6	50.0	7	63.6			39.0
Not continuing education and training											
Employed (part time)			2	15.4	3	25.0					6.0
Employed (full time)	6	30.0	4	30.8	1	8.3	3	27.3			21.6
Unemployed (seeking work)	3	15.0	1	7.7	1	8.3	1	9.1			12.8
Unemployed (not seeking work)†	1	5.0									2.9
SUBTOTAL	10	50.0	7	53.8	5	41.7	4	36.4			43.2
Unknown	1	5.0	1	7.7	1	8.3					17.8
TOTAL	20	100.0	13	100.0	12	100.0	11	100.0			100.0
Total Yr 11 February enrolment	128		127		122		119				

Notes: * The school trendline is being trialled. It is only plotted when there is data for each calendar year.

† Includes deceased students.

^ 2008 benchmarks will be calculated in August, when data from all schools has been submitted.

School against State



Exit Destination: Students who left at the end of Year 12

School no: 8818

School name: Horsham College

Explanation: The destination of students who left at the end of Year 12.

Source of data: Data retrieved electronically from CASES21 following February census.

Exit Destination	2004		2005		2006		2007		2008		2007 state^
	n	%	n	%	n	%	n	%	n	%	
Continuing education and training											
Government School					1	0.9		2	1.6		1.2
Non-Government School	1	0.8									0.3
University	33	26.8	66	54.5	43	36.8	58	46.0			36.6
Other Training Provider	16	13.0	10	8.3	19	16.2					2.7
(new in 2007)											
TAFE / RTO / ACE							2	1.6			22.7
Apprenticeship / Traineeship							12	9.5			5.6
Home Schooling											0.0
Deferred											4.1
(ceased in 2007)											
School (non Victorian)					3	2.6					
TAFE	12	9.8	5	4.1	8	6.8					
Private Registered Training Organisation			2	1.7	1	0.9					
Adult and Community Education Organisation											
SUBTOTAL	62	50.4	83	68.6	75	64.1	74	58.7			73.2
Not continuing education and training											
Employed (part time)	11	8.9	4	3.3	7	6.0	15	11.9			5.5
Employed (full time)	19	15.4	23	19.0	22	18.8	12	9.5			10.5
Unemployed (seeking work)	14	11.4	5	4.1	13	11.1	23	18.3			4.4
Unemployed (not seeking work)†	1	0.8	2	1.7							0.7
SUBTOTAL	45	36.6	34	28.1	42	35.9	50	39.7			21.1
Unknown	16	13.0	4	3.3			2	1.6			5.7
TOTAL	123	100.0	121	100.0	117	100.0	126	100.0			100.0
Total Yr 12 February enrolment	128		127		122		119				

Notes: * The school trendline is being trialled. It is only plotted when there is data for each calendar year.

† Includes deceased students.

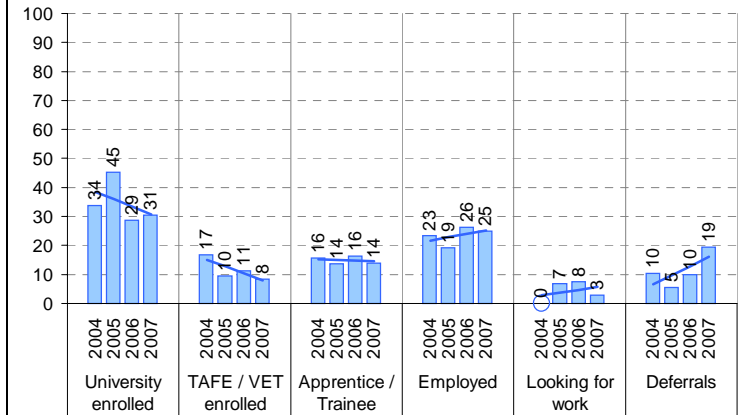
^ 2008 benchmarks will be calculated in August, when data from all schools has been submitted.

On Track

Source of data: Data received from a telephone survey of Year 12 completers, conducted in April / May of the subsequent year.

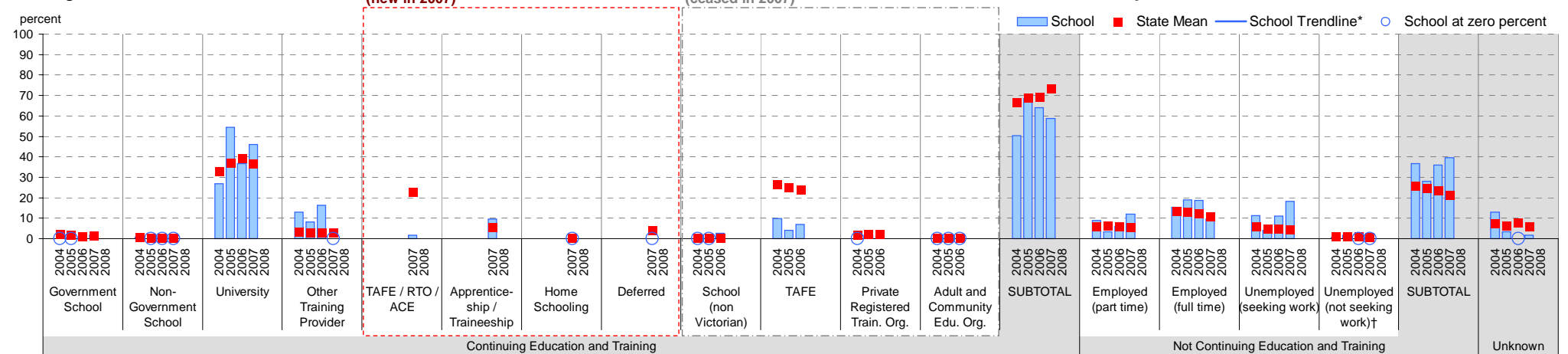
School only

percent



Note: The exit destination data from On Track and CASES21 is not directly comparable for several reasons, one of which is the different bases. CASES21 data is based on all Year 12 completers, whereas On Track is based on Year 12 completers who responded to the survey. Hence the CASES21 data has an "unknown" category and the On Track data does not. Another reason is the slightly different categories for example, CASES21 includes a "home schooling" category.

School against State



Student Absence

School no: 8818

School name: Horsham College

Source of data: Data retrieved electronically from CASES21.

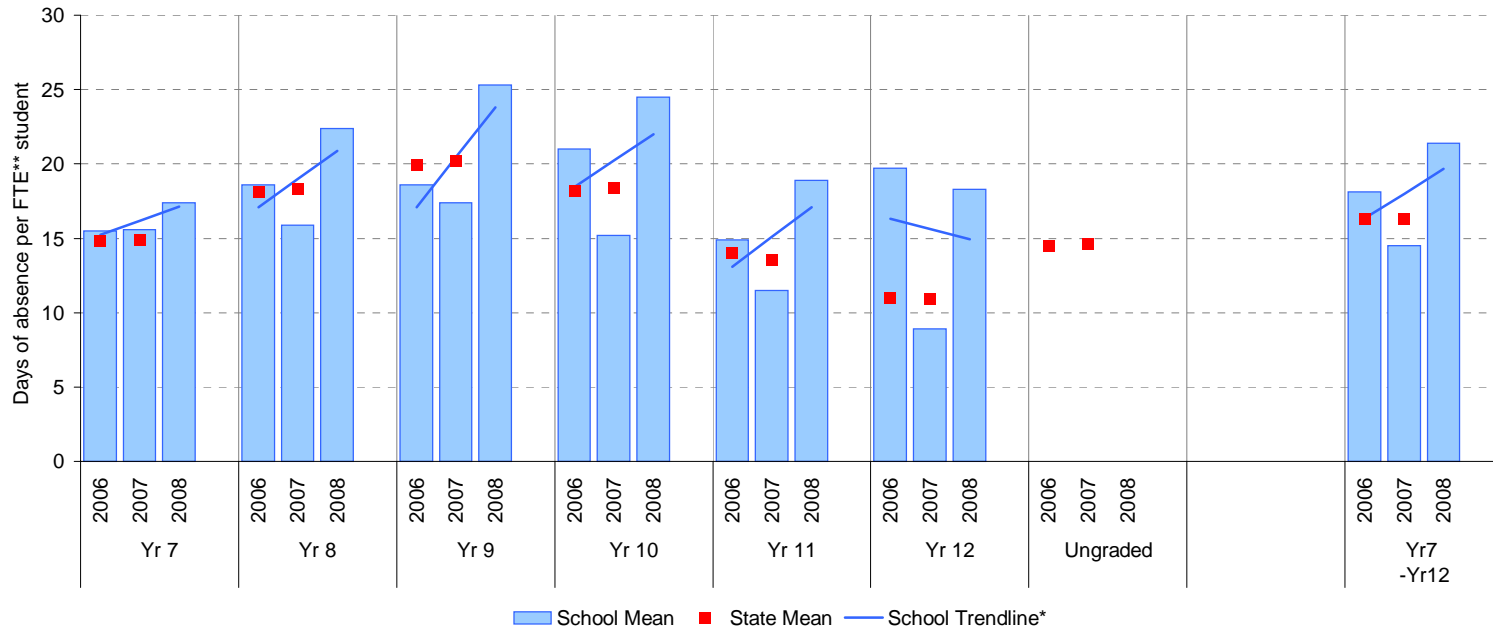
Explanation: The average (mean) number of absent days† per FTE** student.

Note that 20 absent days equates to 1 absent day per fortnight, and 10 absent days to 1 absent day per month.

	School						2007 state benchmark^		
	2006		2007		2008		25th ptile	Mean	75th ptile
	Enrolments	Avg absent days / FTE** student	Enrolments	Avg absent days / FTE** student	Enrolments	Avg absent days / FTE** student			
Yr 7	183.9	15.5	191.6	15.6	176.4	17.4	12.6	14.9	18.6
Yr 8	226.1	18.6	184.6	15.9	178.6	22.4	15.1	18.3	22.2
Yr 9	158.5	18.6	230.7	17.4	178.2	25.3	15.9	20.2	24.8
Yr 10	199.6	21	156.4	15.2	217.4	24.5	15.2	18.4	22.8
Yr 11	138.1	14.9	176.1	11.5	151.9	18.9	10.9	13.5	18.5
Yr 12	117.6	19.7	117.6	8.9	149.3	18.3	8.3	10.9	14.8
Ungraded								14.6	
7-12 mean		18.1		14.5		21.4		16.3	

Notes: † Includes non-curriculum absences only (absence codes 200, 201, 202, 203, 205, 206, 207, 208, 209, 210, 211, 300, 401, 500, 700, 800, 804, 805, 900).
 * The school trendline is only plotted when there is data for each calendar year.
 ** FTE = Full Time Equivalent (including part-time and part-year fractions).
 ^ 2008 benchmarks and percentiles will be calculated in August, when data from all schools has been submitted.

School Mean against State Mean^



School Mean as percentile against SFO percentile range^



Parent Opinion

School no: 8818

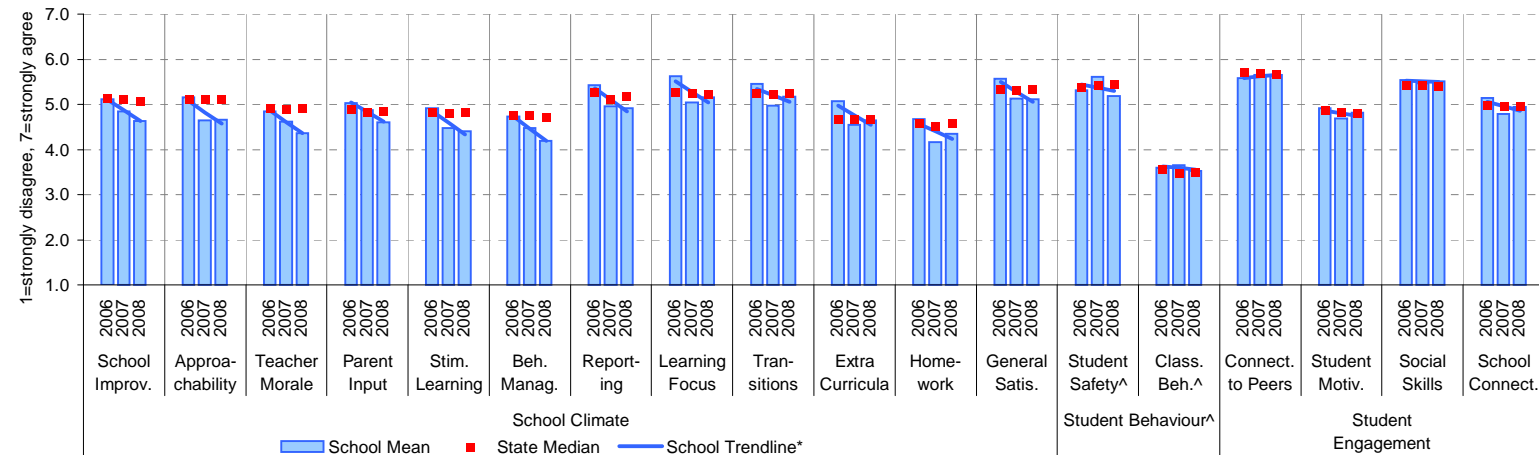
School name: Horsham College

Explanation: A self-completion questionnaire to obtain parents' opinions of the school. Parents rated a number of statements using a scale where 1=strongly disagree & 7=strongly agree. The statements were grouped into the following categories.

Source of data: Data scanned from questionnaires completed by parents.

Variable No. Name	Year	School mean	State Secondary median
1 School Improvement	2006	5.11	5.13
	2007	4.85	5.11
	2008	4.64	5.07
2 Approachability	2006	5.16	5.11
	2007	4.65	5.10
	2008	4.66	5.12
3 Teacher Morale	2006	4.85	4.92
	2007	4.62	4.88
	2008	4.36	4.89
4 Parent Input	2006	5.02	4.89
	2007	4.88	4.83
	2008	4.60	4.84
5 Stimulating Learning	2006	4.91	4.81
	2007	4.47	4.79
	2008	4.40	4.82
6 Behaviour Management	2006	4.73	4.76
	2007	4.47	4.76
	2008	4.19	4.71
7 Reporting	2006	5.43	5.28
	2007	4.96	5.11
	2008	4.92	5.17

School Mean against Secondary State Mean



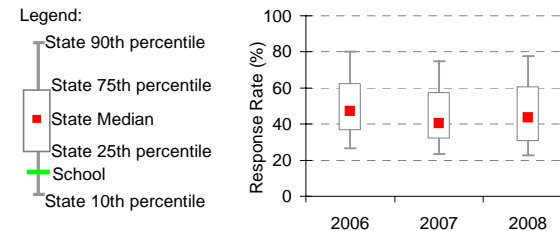
Notes: * The school trendline is plotted when there is data for each calendar year.

^ Benchmarks available for Primary, Secondary, Pri/Sec, Special and SDS schools.

** If there were 6 or less respondents, table data is not shown for confidentiality reasons. If there were 3 or less respondents, graph data is not shown for confidentiality reasons.

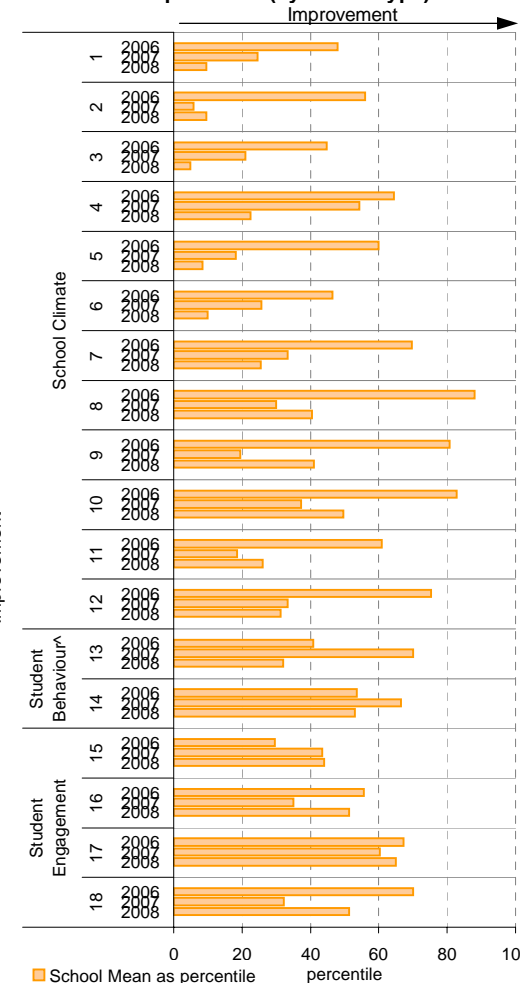
^ Parents' responses to all negatively phrased questions have been reversed for reporting purposes. Across all variables, the higher the score or percentile rank, the more positive parents' perceptions.

School response rate** against Secondary school distribution



Year	No. of respondents	No. invited	Response Rate
2006	74		N/A
2007	70		N/A
2008	83		N/A

School Mean as percentile (by school type)



Staff Opinion

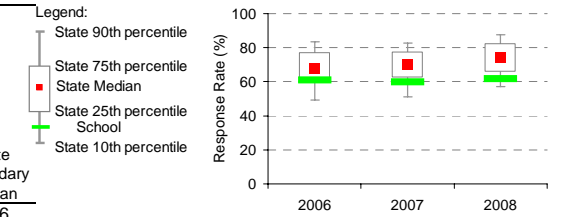
School no: 8818

School name: Horsham College

Explanation: A self-completion questionnaire to obtain the staff's opinions of the school. The survey was administered online using the School Organisational Health Questionnaire.

Source of data: Data transmitted from school staff to DEECD via an online survey application.

School response rate** against Secondary school distribution



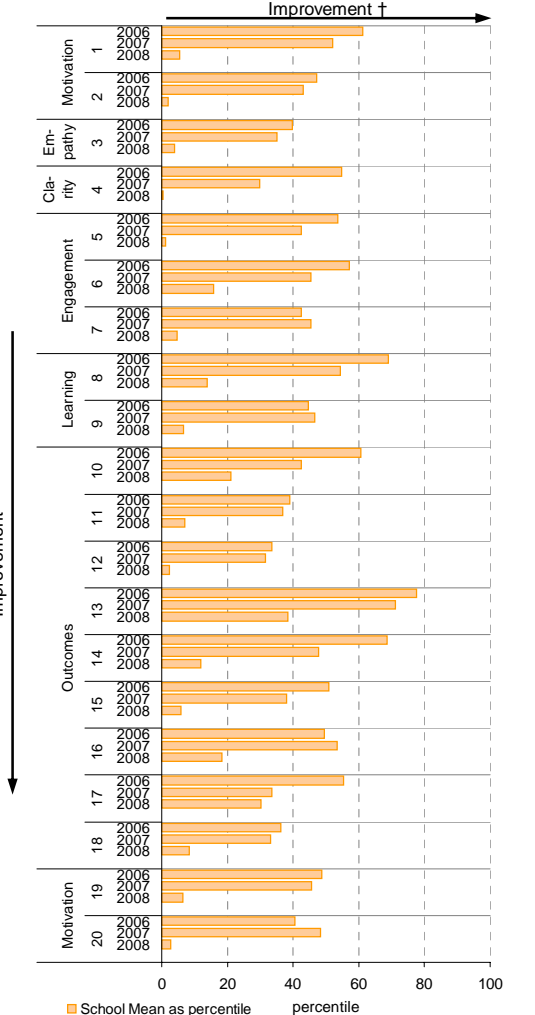
	No. of respondents	No. invited	Response Rate
2006	80	131	61%
2007	71	119	60%
2008	71	115	62%

Variable	No.	Name	Year	School mean	State Secondary median
1 Individual Morale			2006	65.5	64.2
			2007	64.0	63.5
			2008	53.6	65.0
2 School Morale			2006	59.9	60.8
			2007	58.8	60.2
			2008	40.4	62.2
3 Supportive Leadership			2006	61.2	65.0
			2007	60.6	63.8
			2008	46.8	65.8
4 Role Clarity			2006	68.5	68.0
			2007	65.2	67.8
			2008	55.3	69.1
5 Professional Interaction			2006	68.9	68.1
			2007	67.4	68.3
			2008	55.3	70.4
6 Participative Decision-Making			2006	60.3	59.0
			2007	57.6	58.7
			2008	51.9	59.8
7 Goal Congruence			2006	63.4	64.7
			2007	63.9	65.3
			2008	52.7	66.4

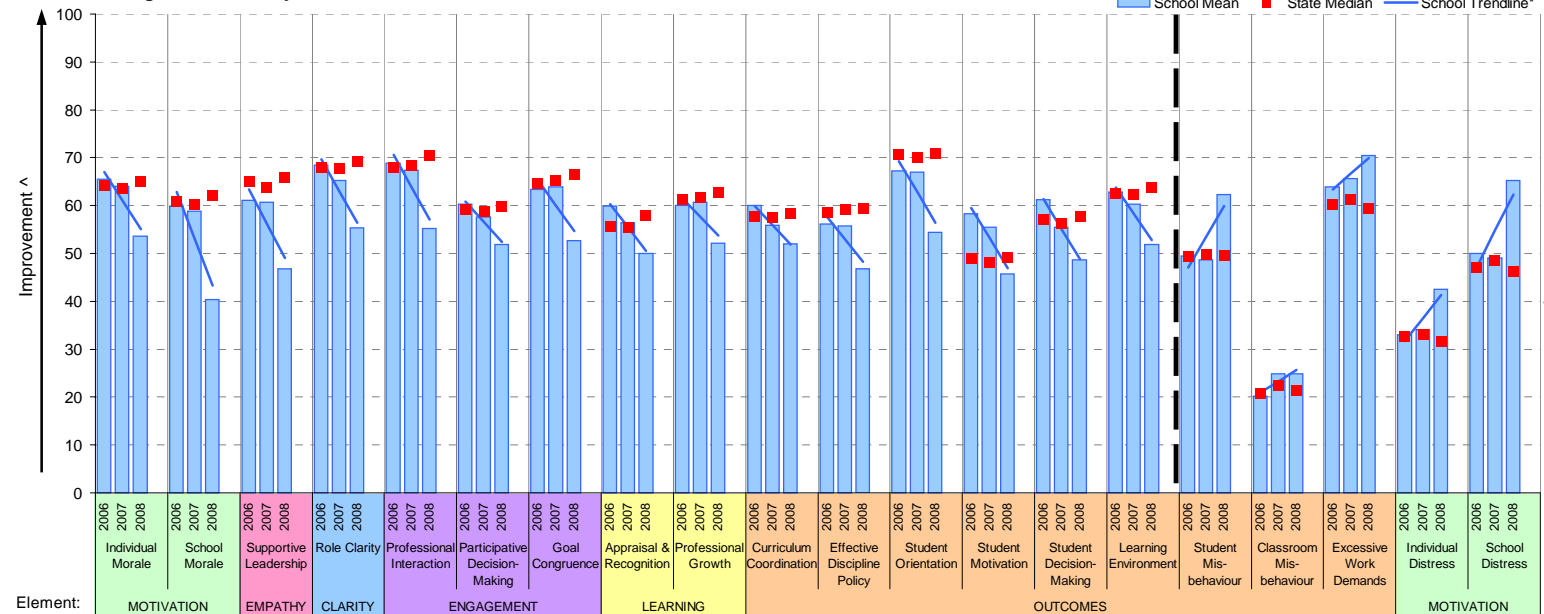
Variable	No.	Name	Year	School mean	State Secondary median
8 Appraisal & Recognition			2006	59.8	55.6
			2007	56.4	55.4
			2008	50.1	57.9
9 Professional Growth			2006	60.0	61.2
			2007	60.7	61.6
			2008	52.2	62.7
10 Curriculum Coordination			2006	60.0	57.8
			2007	55.8	57.5
			2008	51.9	58.4
11 Effective Discipline Policy			2006	56.2	58.5
			2007	55.7	59.2
			2008	46.8	59.5
12 Student Orientation			2006	67.2	70.5
			2007	66.9	70.0
			2008	54.4	70.8
13 Student Motivation			2006	58.3	48.9
			2007	55.4	48.1
			2008	45.7	49.0
14 Student Decision-Making			2006	61.2	57.2
			2007	55.4	56.2
			2008	48.6	57.8

Variable	No.	Name	Year	School mean	State Secondary median
15 Learning Environment			2006	62.8	62.6
			2007	60.2	62.3
			2008	51.8	63.8
16 Student Misbehaviour			2006	49.5	49.3
			2007	48.7	49.9
			2008	62.3	49.6
17 Classroom Misbehaviour			2006	20.3	20.9
			2007	24.9	22.4
			2008	24.8	21.4
18 Excessive Work Demands			2006	64.0	60.4
			2007	65.6	61.4
			2008	70.5	59.4
19 Individual Distress			2006	33.0	32.6
			2007	34.0	33.2
			2008	42.5	31.7
20 School Distress			2006	50.1	47.1
			2007	49.0	48.6
			2008	65.2	46.2

School Mean as percentile (by school type)



School Mean against Secondary State Median



Notes: * The school trendline is being trialled. It is only plotted when there is data for each calendar year.

** If there were 6 or less respondents, table data is not shown for confidentiality reasons. If there were 3 or less respondents, graph data is not shown for confidentiality reasons.

^ The higher the school mean, the more positive the outcome for variables 1 to 15. The lower the school mean, the more positive the outcome for variables 16 to 20.

† The higher the school percentile, the more positive the outcome for all variables.

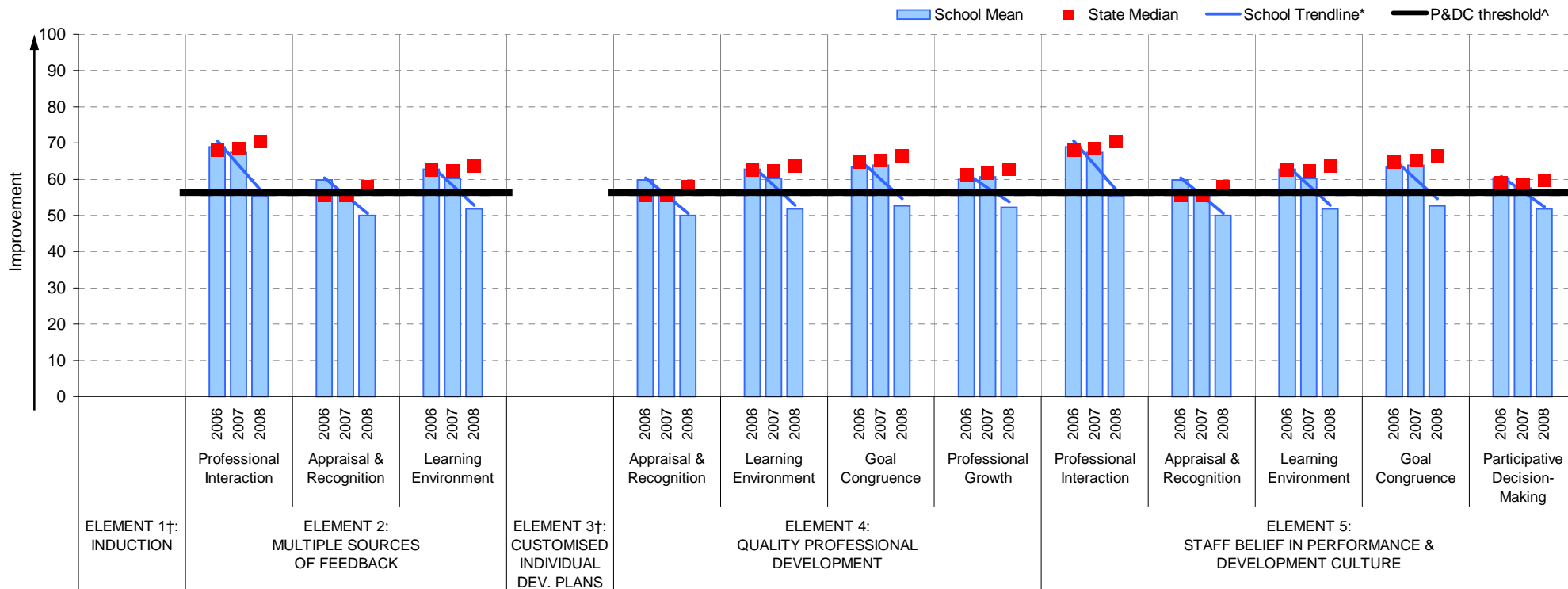
^^ Benchmarks are available for Primary, Secondary, Pri/Sec, Special & SDS schools.

Performance & Development Culture (P&DC)^{††}

NEW

School no: 8818
School name: Horsham College
Explanation: The data on this page refers to the Staff Opinion Survey.
Source of data: Data transmitted from school staff to DEECD via an online survey application.

School Mean against Secondary State Median



- Notes:
- †† An assessment of the correlation between the P&DC Questionnaire and the Staff Opinion Survey was undertaken using data from Victorian Government schools that completed both surveys from 2005 to 2007 (ie. 699 schools). This led to the identification of the components of the Staff Opinion Survey that could be used to assist schools with the ongoing monitoring of their performance and development culture. Refer to the P&DC website for further information: <http://www.education.vic.gov.au/management/schoolimprovement/panddc/default.htm>. For numerical results relating to the above graph, refer to the Staff Opinion Survey page in this report.
 - † Note that there is no significant correlation between the Staff Opinion Survey and P&DC elements 1 (Induction) and 3 (Customised Individual Development Plans).
 - ^ The P&DC threshold was derived from the P&DC Questionnaire 'percent favourable' methodology where a school is considered at the standard of accreditation when their Element score is >75% favourable (ie. at least 75% of staff selected the top two response categories in the P&DC Questionnaire).
 - * The school trendline is only plotted when there is data for each calendar year.
 - ** If there were 3 or less respondents, graph data is not shown for confidentiality reasons.
 - ^^ Benchmarks are available for Primary, Secondary, Pri/Sec, Special & SDS schools.

Staff Sick Leave

School no: 8818

School name: Horsham College

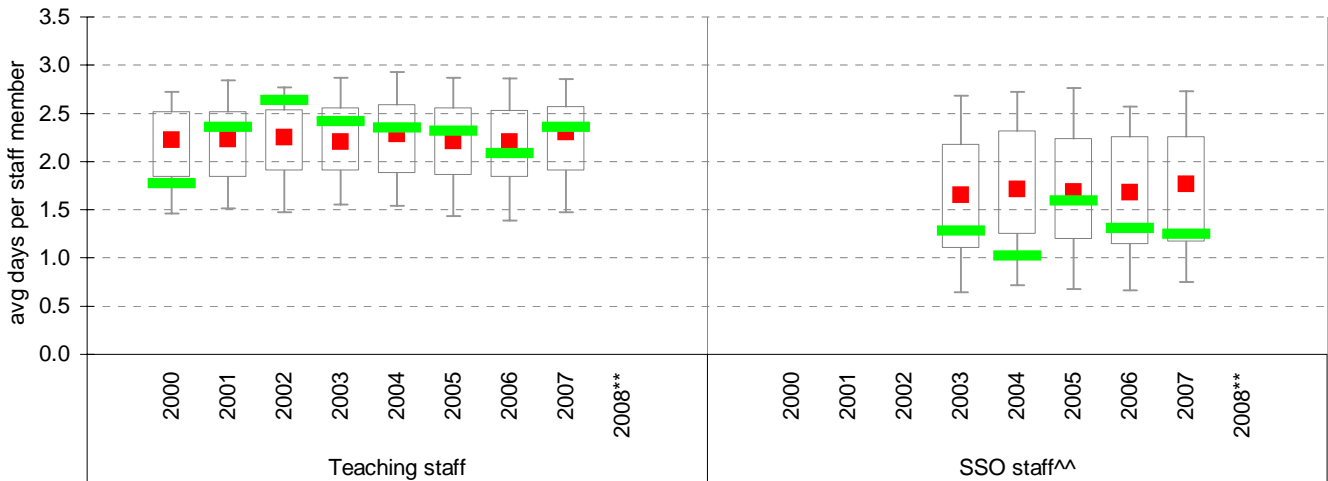
Explanation: The number of non-certificated and total sick leave days taken per staff member. A detailed explanation on how staff sick leave is calculated is provided in the Annual Reports Frequently Asked Questions page of the Standards website (<http://www.sofweb.vic.edu.au/standards/account/arepq.htm>).

Source of data: Human Resources Management System (HRMS)^.

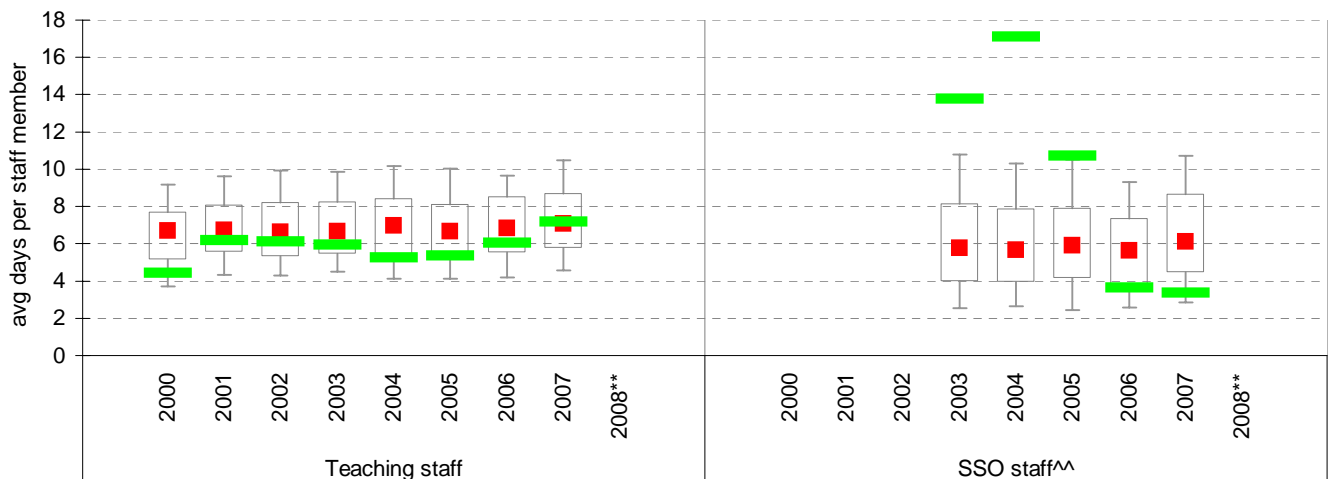
Staff Type	Non-Certificated sick leave days per staff member^									2007 State Median**
	2000	2001	2002	2003	2004	2005	2006	2007	2008**	
Teacher	1.77	2.36	2.63	2.42	2.35	2.32	2.08	2.36		2.31
SSO^^					1.02	1.59	1.31	1.25		1.77

Staff Type	Total sick leave days per staff member^									2007 State Median**
	2000	2001	2002	2003	2004	2005	2006	2007	2008**	
Teacher	4.43	6.19	6.10	5.95	5.24	5.36	6.05	7.17		7.06
SSO^^					17.10	10.72	3.65	3.36		6.10

NON-CERTIFICATED sick leave



TOTAL sick leave

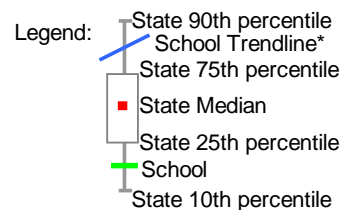


Note: * The school trendline is only plotted when there is data for each calendar year.

** Data for 2008 will be available in April / May of 2009.

^ There may be some discrepancy between the results from CASES & those from HRMS. The latter are considered to be more accurate.

^^ Data for SSO (School Services Officer) staff is only available from 2003.



Teaching Staff Retention

School no: 8818

School name: Horsham College

Explanation: The retention rate of teaching staff is determined by matching staff payroll records for the last pay in June of one year (Year A), to the last pay in June of the following year (Year B).

Source of data: Human Resources Management System (HRMS).

Teaching Staff*

Year A	Year B	Number of Teaching Staff in Year A	Number of Teaching Staff retained in Year B	Teaching Staff Retention Rate	Statewide Average
2005	2006	98	86	88%	87%
2006	2007	99	89	90%	86%
2007	2008	106	95	90%	84%

Of the 98 teaching service staff at June 2005 (including those on leave without pay), 86 or 88% were still at the school at June 2006. This figure across all Government schools was 87%.

Of the 99 teaching service staff at June 2006 (including those on leave without pay), 89 or 90% were still at the school at June 2007. This figure across all Government schools was 86%.

Of the 106 teaching service staff at June 2007 (including those on leave without pay), 95 or 90% were still at the school at June 2008. This figure across all Government schools was 84%.

Ongoing Teaching Staff*^

Year A	Year B	Number of Ongoing Teaching Staff in Year A	Number of Ongoing Teaching Staff retained in Year B	Ongoing Teaching Staff Retention Rate	Statewide Average
2005	2006	85	76	89%	91%
2006	2007	85	78	92%	90%
2007	2008	89	81	91%	88%

Of the 85 ongoing teaching service staff at June 2005 (including those on leave without pay), 76 or 89% were still at the school at June 2006. This figure across all Government schools was 91%.

Of the 85 ongoing teaching service staff at June 2006 (including those on leave without pay), 78 or 92% were still at the school at June 2007. This figure across all Government schools was 90%.

Of the 89 ongoing teaching service staff at June 2007 (including those on leave without pay), 81 or 91% were still at the school at June 2008. This figure across all Government schools was 88%.

Notes: * Teaching staff includes Principal class, Teacher class and Instructor class. Teaching staff employed as visiting teachers, guidance officers, curriculum consultants, etc. are excluded as they are not charged to a particular school.

^ Not including fixed term staff, except for where staff had changed from ongoing in Year A to fixed term in Year B.

Bank Balances

School no: 8818

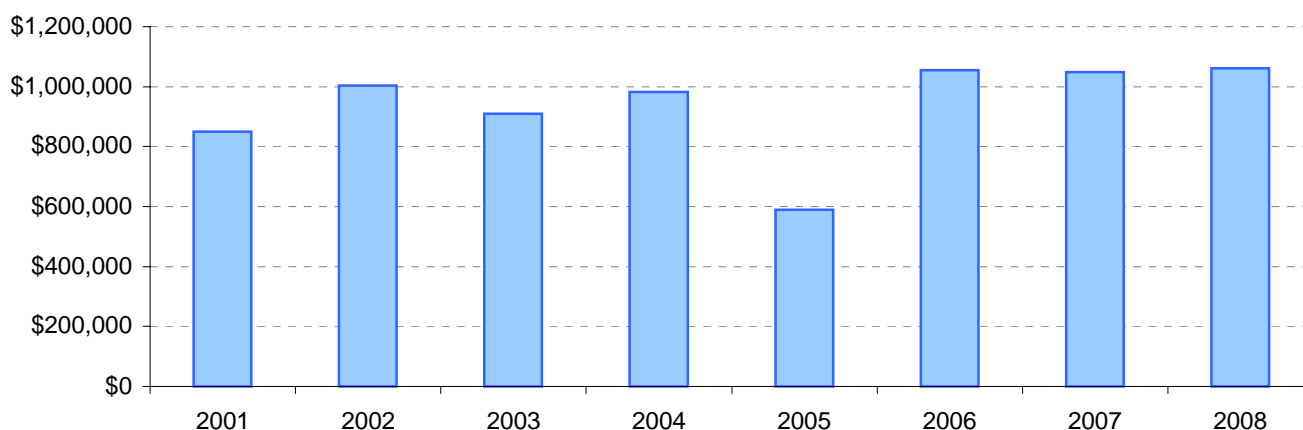
School name: Horsham College

Explanation: Account balance figures include official and investment accounts, and are calculated by taking the opening balance at 1st January plus the total receipts at 31st December less total payments at 31st December.

Account Balances (Official plus Investment Accounts)

2001	\$848,776	2005	\$589,050
2002	\$1,004,386	2006	\$1,053,925
2003	\$910,021	2007	\$1,048,457
2004	\$982,093	2008	\$1,060,489

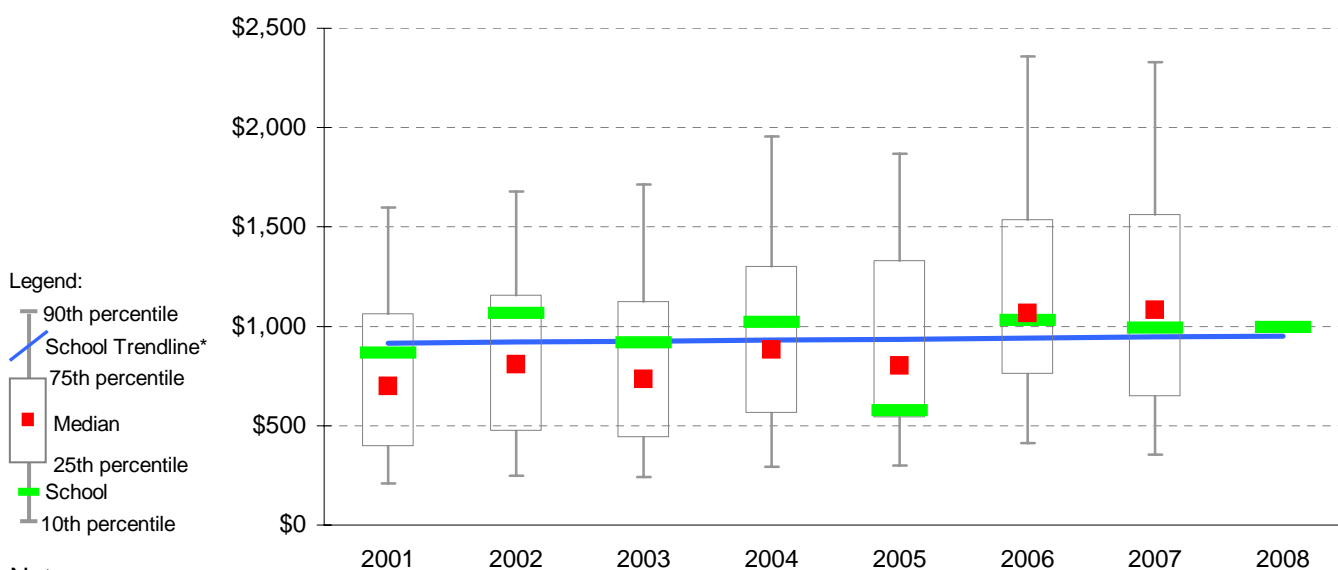
Account Balances



Account Balances (Official plus Investment Accounts) per student[†]

2001	\$865	2005	\$575
2002	\$1,066	2006	\$1,032
2003	\$917	2007	\$993
2004	\$1,020	2008	\$996

School account balances per student enrolled in August census plotted on state Secondary benchmarks[^]



Notes:

* The school trendline is being trialled. It is only plotted when there is data for each calendar year.

† The account balance per student has been calculated to enable some comparison to be made between schools.

^ Benchmarks for primary, secondary, pri/sec, SDS, special and language schools.